

# 西班牙，赫罗纳，Bescano某独栋住宅 / Josep Ferrando Bramona



建筑师： Josep Ferrando Bramona

地点： 西班牙赫罗纳

合作者： Jordi Queralt + Marc Nadal

面积： 400 sqm

预算：720,000 €

竣工年份：2011年

摄影：Pedro Pegenaute





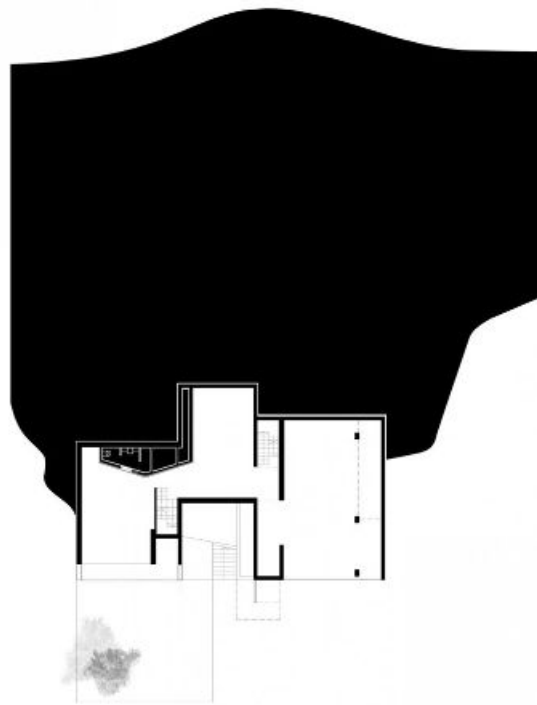
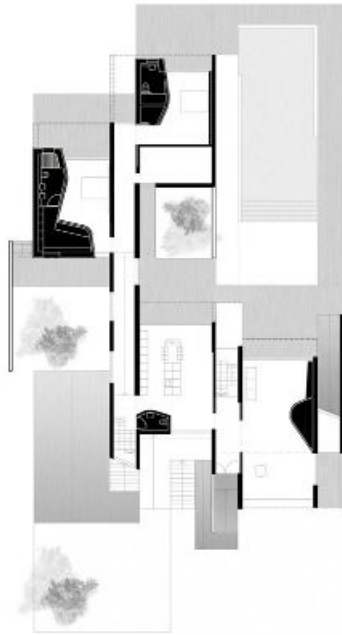


这座住宅坐落在一个山坡之上，与周围的环境产生了不同的关系。一侧的树冠与阳台同高，另一侧，住户可以从起居室看到缠绕的树枝，通过起到过滤器作用的树枝可以看到室外。覆盖玄武岩的屋顶框住并突出了周围不同深度的景色，为住户提供了众多不同的景色。



住宅的位置突出了四季的变化。木材作为遮屏或百叶的材料，可以全年调节进入室内的光线的多少。夏季，它可以作为窗帘挡住阳光，冬季叶子掉落后，就可以完全打开，从而实现住宅与变化的季节和景观的互动。

在某些地方，瓷砖倾斜铺设，直指地平线，使建筑的轮廓线融入背景山脉之中。在另外一些地方，不规则的飞檐界定了住宅的天井。

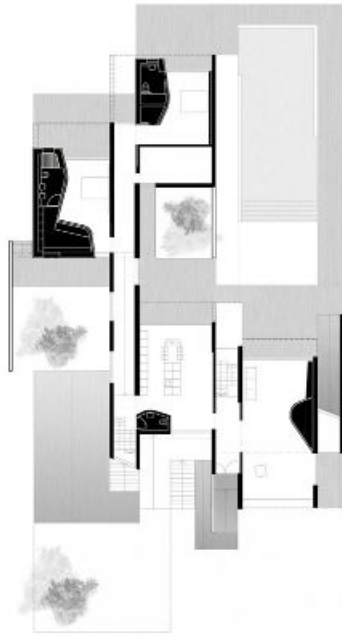


墙体序列彼此交错设置，使不同空间形成对角线关系。延长的墙体和屋顶瓷砖使室内空间可以向室外探出，同时捕捉美丽的景色，将建筑与景观联系在一起。因此，室外空间也成为住宅自身的空间。

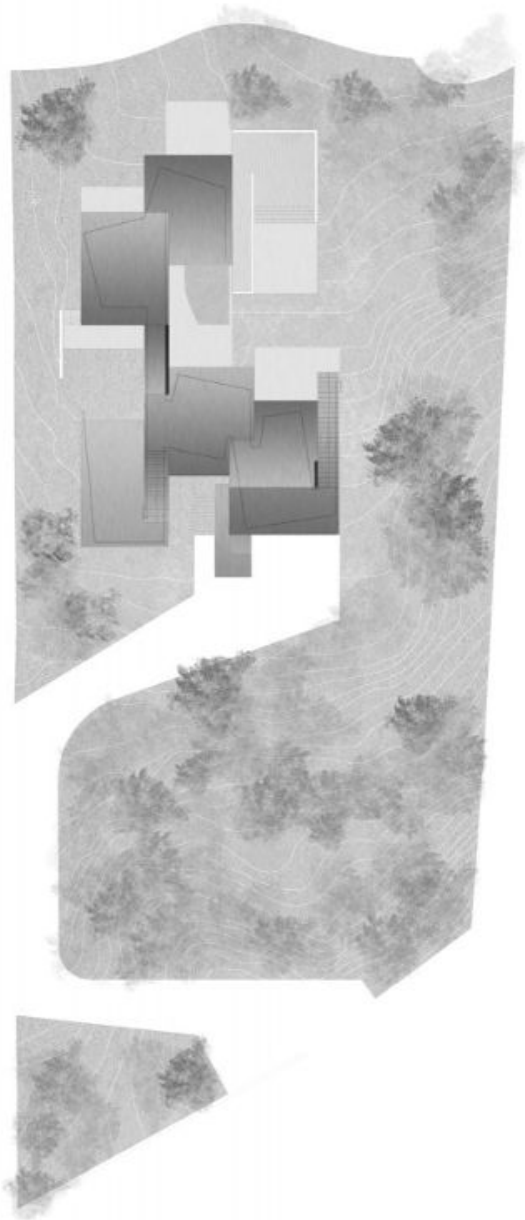








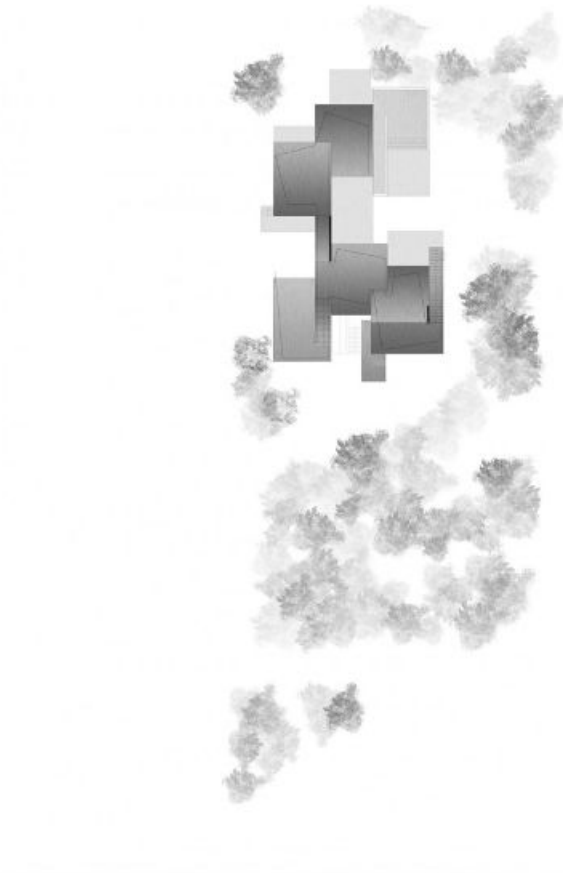




原文:

Architects: <http://www.josepferrando.com/>Josep Ferrando Bramona

Location: Girona, Spain



Collaborators: Jordi Queralt + Marc Nadal

Area: 400 sqm

Budget: 720,000 €

Completion: 2011

Photographs: <http://www.pedropegenaute.es/>Pedro Pegenaute

The house is situated on a crest, generating different relationships with its immediate environs. On one side, the treetops are at the level of a veranda; on another side, the entwined branches, when viewed from the sitting area, act as a filter through which to contemplate the outdoors. The basalt-covered roof frames and underlines in black the views which provide different depth perceptions, thus offering the dweller a differing range of situational views.

The location of the house highlights the changing seasons. The wood serves as a screen or shutter allowing more and less light to filter through throughout the year. In summer it serves as a drawn curtain and in winter after the leaves have fallen, as an open one. Thus the house interacts with the changing seasons and landscape.

In some cases the inclination of the tiles point towards the horizon, melting the skyline of the building into the hills in the background. In others, the irregular cornice delimits the patio of the house.

The sequences of walls that are set off each other foment diagonal relationships between spaces. The prolongation of the walls and the roof tiles allow the projection of the interior space towards the exterior, at the same time that they capture the scenery framed, creating lines that conjoins the building to the landscape. In this way, the house embraces the exterior space as its own.