

## 黎巴嫩，贝鲁特，住宅楼梯设计/. PSLAB



在专为DW5的Bernard Khoury在贝鲁特设计的私人住宅中，.PSLAB建筑事务所的目标是令该空间内的楼梯突出楼梯的特点和形状，同时为住户提供独特的体验。这个项目的灵感来自于楼梯的主要特色。其目的是打造一种照明理念，不仅反映出这些特色，还能完善整个楼梯结构。设

计中遇到的限制并非来自于空间，而是灯具本身，这些灯具需要经过特殊处理，才能将理念转化为现实。稍后请欣赏更多照片及建筑师提供的项目介绍。

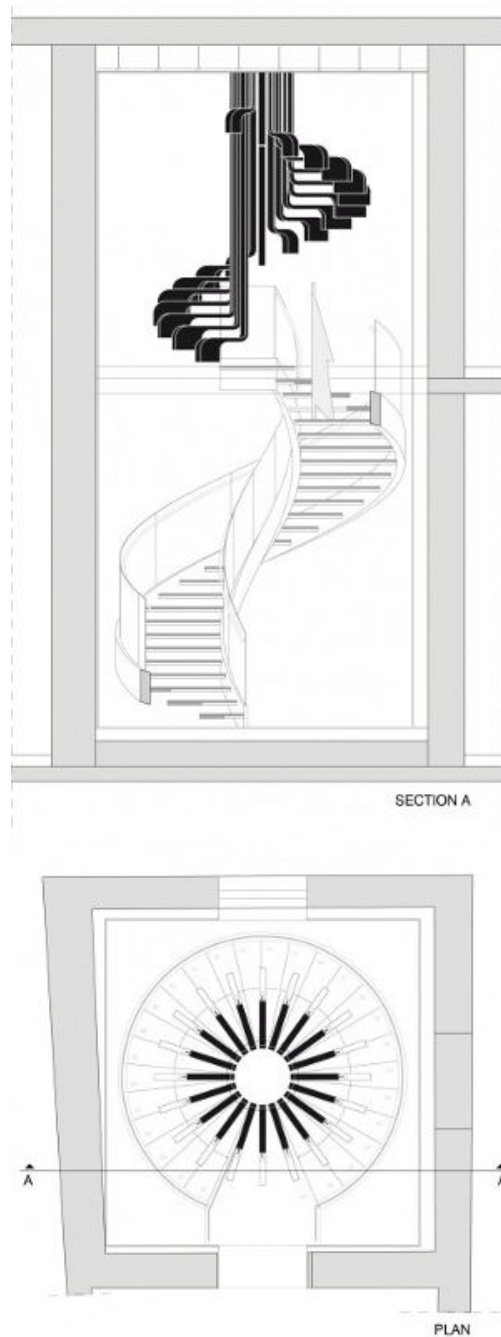


该楼梯位于一个矩形空间内，天花板、地板和墙壁均覆盖以完全相同的木板。楼梯的特色是拥有完美的圆形，除了从一楼到顶楼的踏步之外全无其他连接点。楼梯为双层高度，以螺旋上升的姿态塑造其核心。另外在天花板上安装了一个颇为壮观的装置，由悬挂式凹槽剖面板构成，从天花板中以与楼梯相同的方式呈螺旋形伸展而出。照明装置悬挂在安装有挤压型材的部分凹入的支承板上，挤压型材用于固定垂直凹槽板。这些凹槽板长短不一，给人一种上升结构的印象。

悬挂凹槽板的末端安装在与之大小相等的伸展矩形臂状结构上。这些伸展的臂状结构内部可安装灯泡，灯光照射到每一个踏步的中央，让人感觉这个装置是随着楼梯而设计的。楼梯的核心就体现在上方的照明装置上，照明装置安装在楼梯上方的凹槽板中，凹槽板与楼梯平行安装，打造楼梯的核心。最终得出了一个宏伟的照明装置，其鲜明的建筑特色不仅反映出楼梯的特色，还能完善整个楼梯结构。



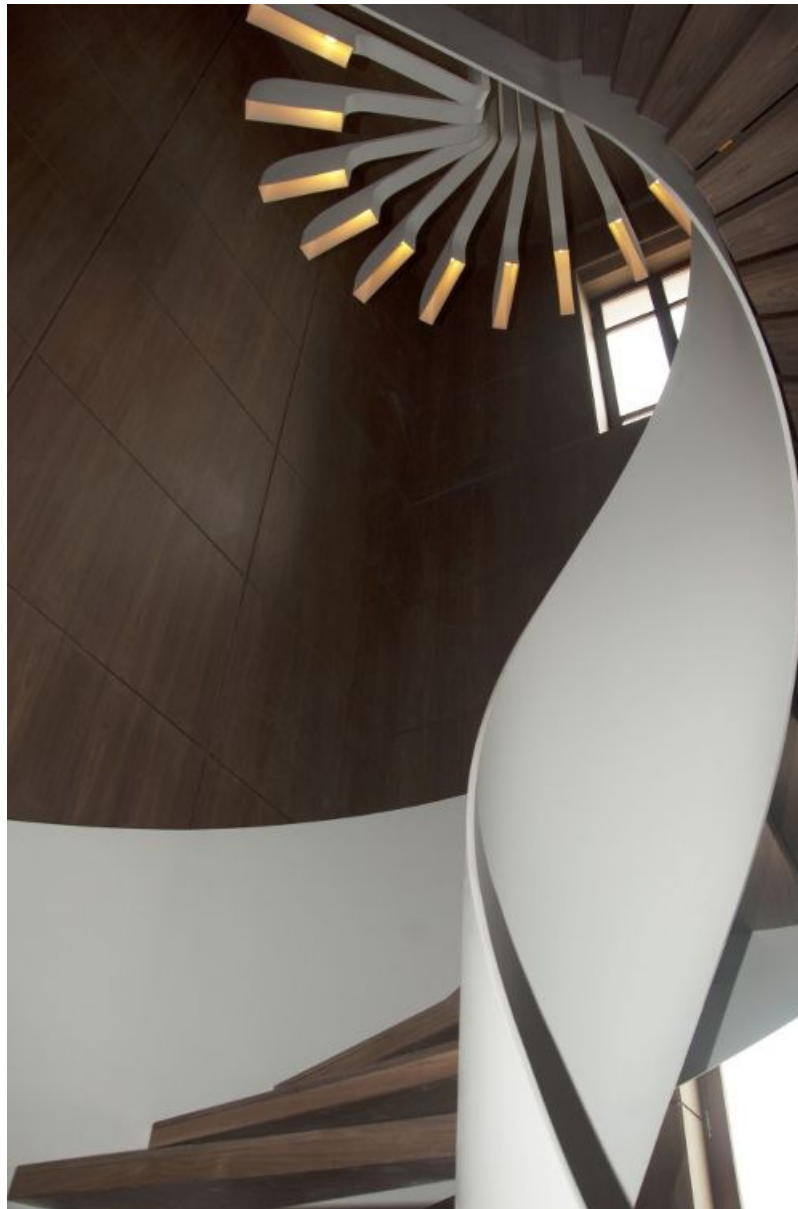
.PSLAB利用定制的挠曲钢筋承托伸展臂，达到加固凹槽板的目的，从而克服了这一挑战。装置外观涂以白色粉末涂层的高级饰面，与空间的感觉互相匹配，这也反映出.PSLAB工厂致力于以手工和定制的方式打造照明装置的特点。项目的成果就是以下两者实现开放式对话的直接结果：.PSLAB和Bernard Khoury，与.PSLAB在所有新项目中所遵循的度身定制法。确立的连续对话促进了顺利的合作，也让建筑师对.PSLAB非常信任，让他们打造的灯光效果与空间设计完美融合。



The resulting lighting fixture, characterized with architectural installation like features, is an offset of the staircase structure and responds well to the characteristics of the space. The ceiling mounted product encompasses both decorative and technical features, demonstrating .PSLAB' s expertise and scope of work.



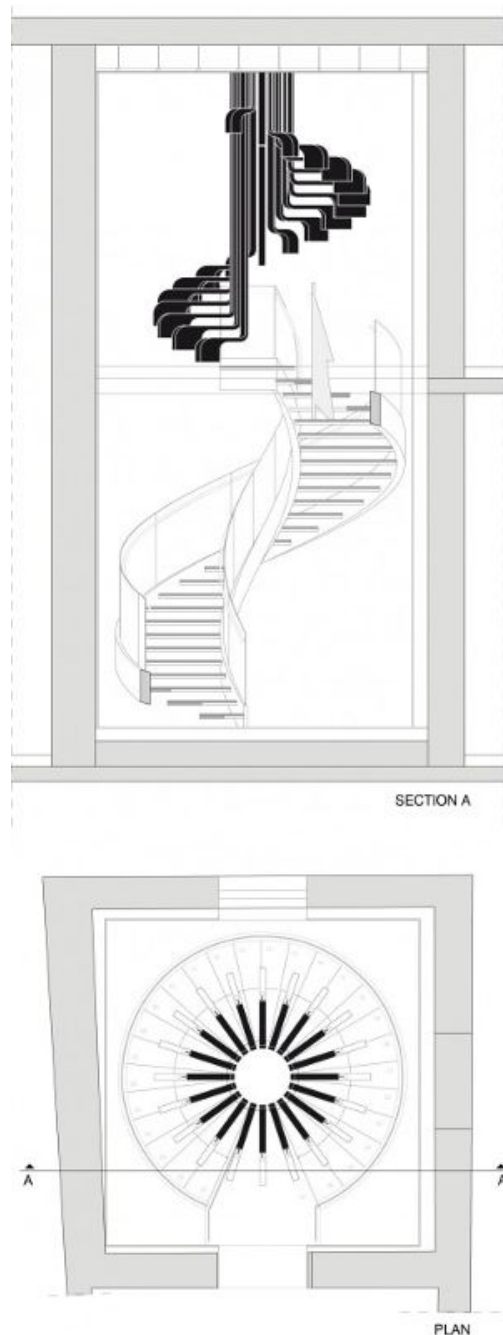




原文:

Designed for Bernard Khoury of DW5 for a private residence in Beirut, .PSLAB' s aim for the staircase in this space is to highlight the distinguishing features and shape of the staircase, all the while offering a distinctive experience. inspiration in this project came from the staircase' s main characteristics. The aim was to create a lighting concept that would not only mirror these distinguishing features but also complement the structure. The constraints encountered came not from the space but from the lighting fixture itself which required special handling to turn a concept into reality. More images and architects' description after the break.

The staircase is located in a rectangular space with uniform wood cladding on ceiling, floors and walls. It is characterized with a perfectly circular form, with the steps starting at the bottom floor and ending at the top floor with no other connecting points. The staircase has a double volume height and spirals up, shaping its central core. An imposing insertion was made in the shape of a ceiling mounted fixture composed of hanging channels reaching out from the ceiling in a



circular manner identical to the staircase. The lighting installation hangs from a partially recessed supporting plate with extruded profiles that serve to firmly set the vertical channels. These channels vary in length, giving the impression of an ascending structure.

The hanging channels are equipped at their extremity with extended rectangular shaped arms of equal size. These extended arms house deep inside the light bulb and reach the center of each step, giving the impression that the fixture follows the staircase. The staircase's core is represented in the lighting installation set above it with the channels positioned in a manner to create a core parallel to that of the staircase. The outcome is a grand scale lighting fixture with distinguishing architectural features that mirror and complement those of the staircase.

.PSLAB overcame this challenge by reinforcing the channels with custom-made bent



steel to carry the extended arms. The fixture, topped with a white powder-coated high-end finish to match the feel of the space, is reflective of the manual work and custom manufacturing skills that go into creating each lighting fixture at the .PSLAB factory. The end-result achieved is a direct outcome of the open dialogue between .PSLAB and Bernard Khoury and a reflection of the bespoke approach .PSLAB follows whenever working on a new project. The established and continuous dialogue allowed for a smooth collaboration and led the architect to place his trust in .PSLAB to create a lighting response that would be in cohesion with his vision for the space.

The resulting lighting fixture, characterized with architectural installation like features, is an offset of the staircase structure and responds well to the characteristics of the space. The ceiling mounted product encompasses both decorative and technical features, demonstrating .PSLAB' s expertise and scope of work.