

日本，京都，Muko某住宅 / Fujiwarramuro Architects



建筑师： Fujiwarramuro Architects

地点： 日本京都Muko

项目建筑师： Shintaro Fujiwara, Yoshio Muro

项目面积：100.29 sqm

摄影： Toshiyuki Yano





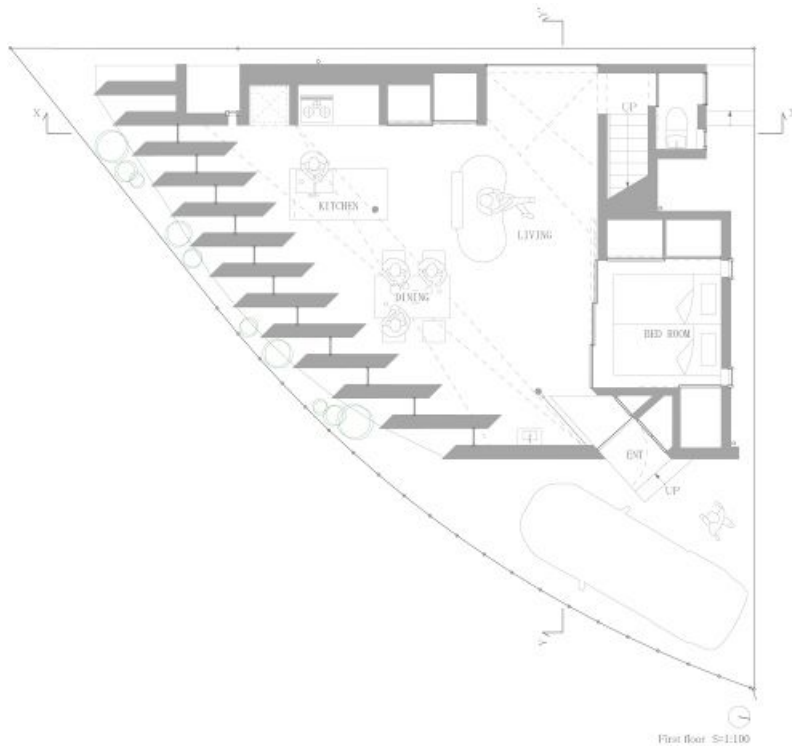
本案项目位于一块扇形的场地中，是一座带有夹层、只有一间卧室的住宅。



在住宅内全年都能感觉到太阳的运动。来自东面的光线经过百叶板进入住宅，照射到室内空间的深处。



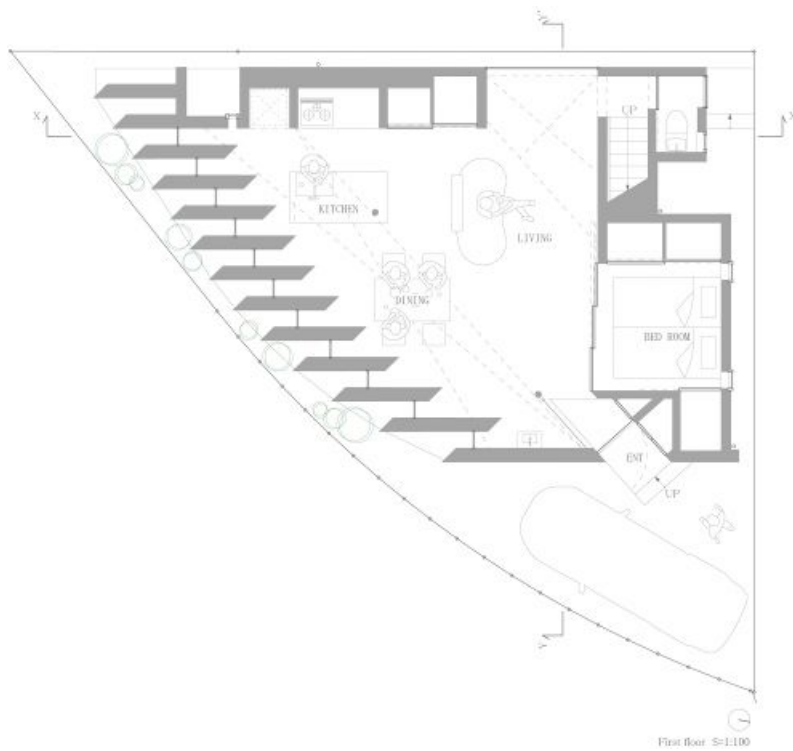
南面的直射阳光照射进建筑内的路径很像淋浴喷出的水的路径。来自西面的光线首先照射到住宅开放式楼梯的墙上，然后反射到室内。

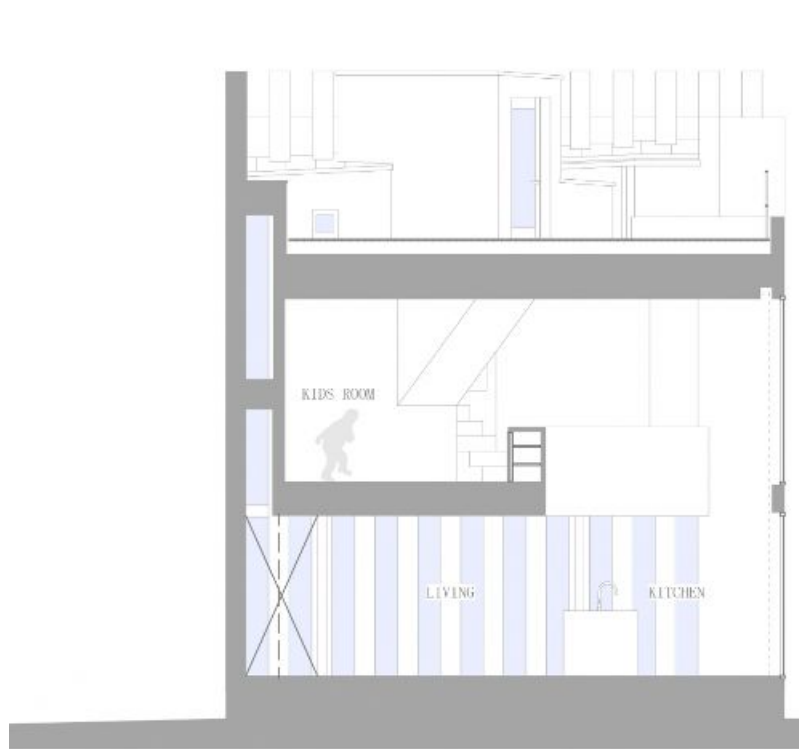
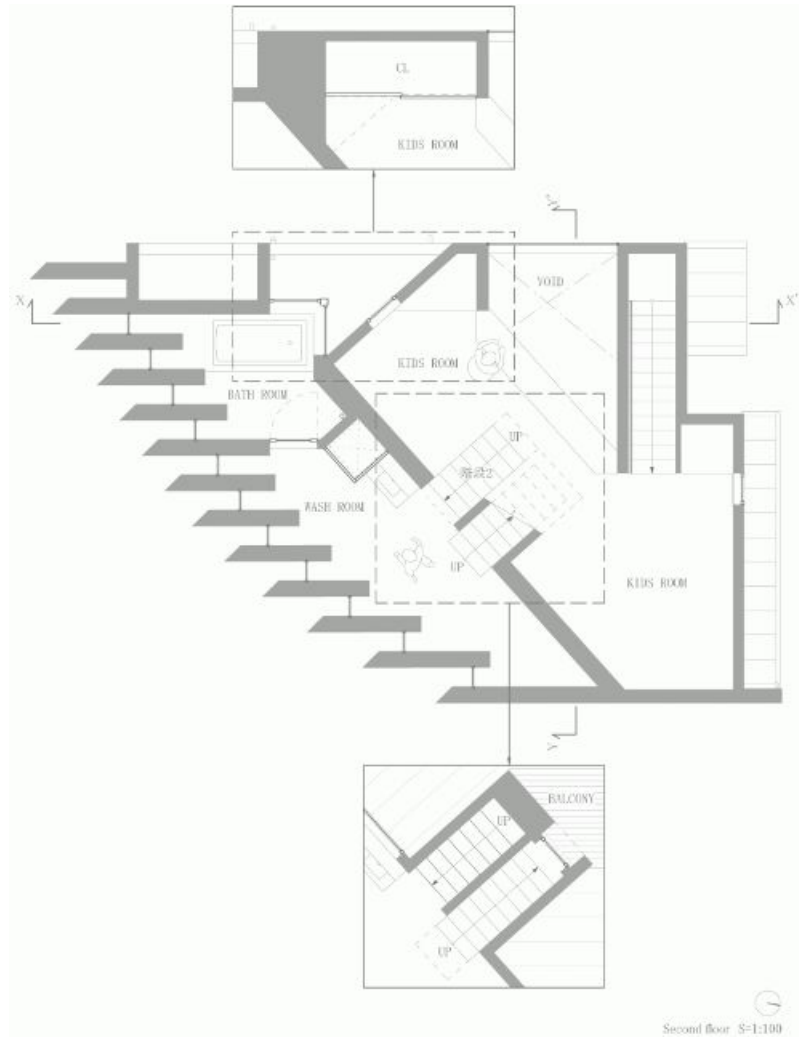






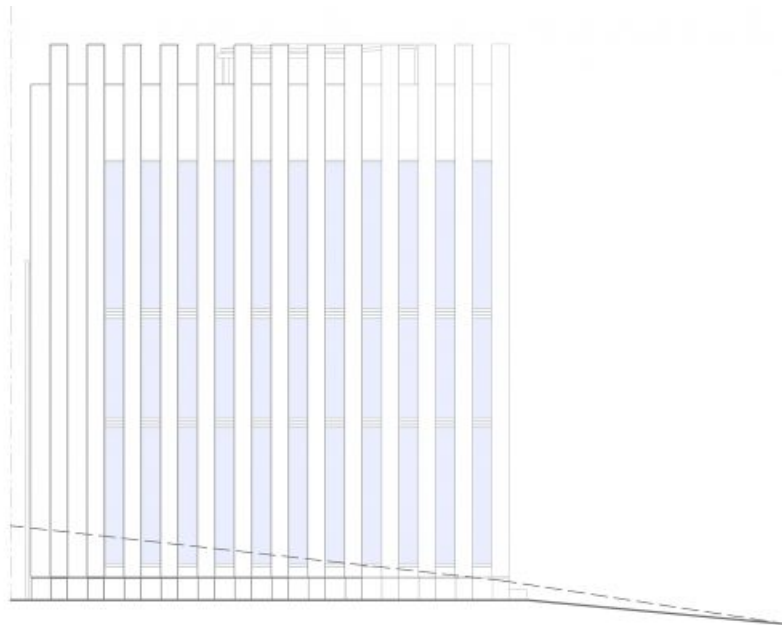




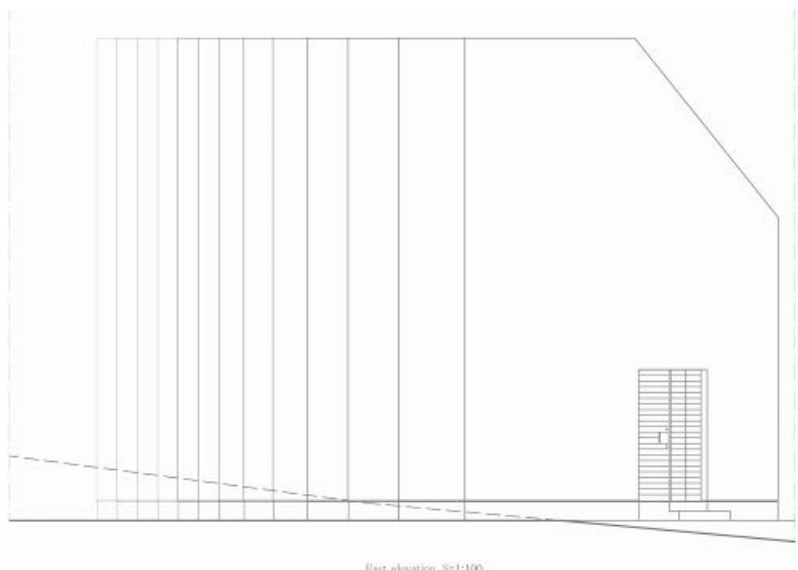




Section X-X' S=1:100



South elevation S=1:100



East elevation S=1:100

原文:

Architects: <http://www.aplan.jp/>Fujiwarramuro Architects

Location: Muko, Kyoto, Japan

Project Architects: Shintaro Fujiwara, Yoshio Muro

Area: 100.29 sqm

Photographs: <http://www.nacasa.co.jp/>Toshiyuki Yano

A mezzanine-floored residence consisting of a single-roomed space, located on a fan-shaped site.

The movements of the sun can be felt inside the house all throughout the year. Light coming from the east strikes the louvered boards before entering the house and reaching deep into its interior.

Direct sunlight from the south traces a shower-like path of lines as it penetrates into the building. Light coming from the west reflects off the walls of this house with an open stairwell before entering it.