

秘鲁，利马，海滨别墅I-5 / Vértice Arquitectos



建筑师： Vértice Arquitectos

地点： 秘鲁利马Las Lomas del Mar海滩

面积： 250平方米

客户： 私人

摄影： Courtesy of Vértice Arquitectos





这座海滨别墅位于利马市南120公里处Cerro Azul的Lomas del Mar海滩5号地块的前面。这个地块多岩石和沙土形成的小山，呈半弯曲状，高出海平面48 米，最低点高度急剧下降8米。从这里可以180° 欣赏南面太平洋的景色，还能看到东面和北面的全景。



开发这个项目的两个主要目标是尽可能开发从社交区域以及主卧室看到的最美海景，并充分利用这一地块的大部分土地。建筑师设计了两个平行的建筑体量，完成了第一个目标，其中一个靠在另一个上，高度高出1.20米，能够观赏到海景。这两个建筑体量通过一条主交通轴连接在一起，这条主交通轴一直延伸到能够俯瞰海滩的游泳池处。



为了充分利用这一地块，建筑师设计了较大的悬挑结构，这是由于该地块的可用面积缩小了，而建筑已经达到了最大高度。第一个建筑体量位于别墅入口的左侧，大多数卧室都设置在这里。主卧室和与之毗邻的露台旋转了45°角，能看到海景。第二个建筑体量位于入口右侧，一层设置了社交区域和服务区域，二层设置了一间家庭娱乐室和一间客房。

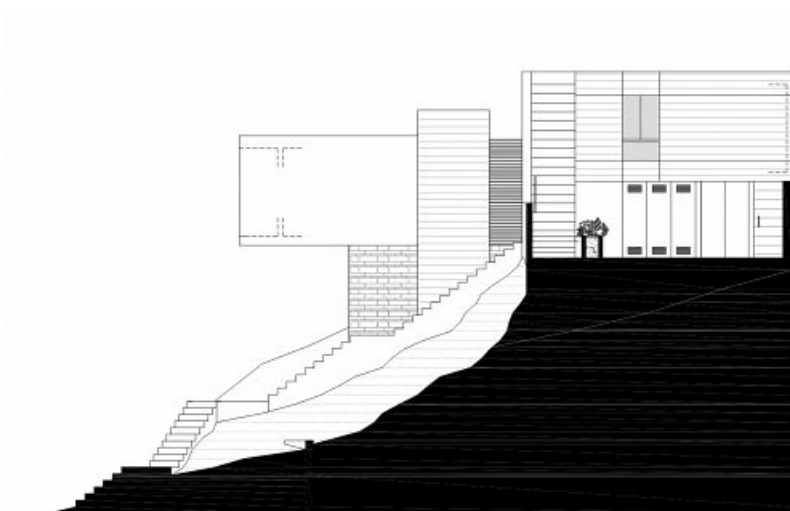


两层的客厅和餐厅区域的尽头是游泳池和一个与之垂直的露台。家庭娱乐室位于二层，对一层的客厅和餐厅是开放的，在家庭娱乐室中也能充分欣赏到海洋的景色。通往二层的楼梯由天然混凝土制成，跨过厨房上方，将厨房与客厅和餐厅区隔开。

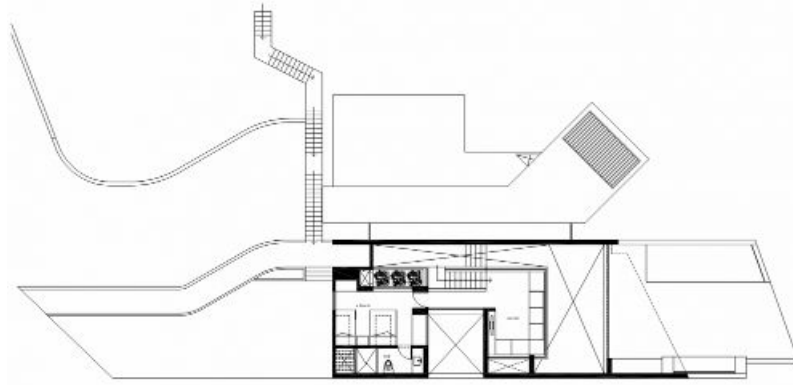


项目中使用的材料有裸露混凝土、墙体涂抹的白漆、不锈钢、钢化玻璃和花岗岩。后者用于覆盖建筑体量所在的基座，目的是将基座与自然地形区分开。游泳池由双层层压玻璃封闭，玻璃的透明性使这里像别墅的其他区域一样能观赏到海景。









原文:

Architects: <http://www.verticearquitectos.com/>Vértice Arquitectos

Location: Las Lomas del Mar Beach, Lima, Perú

Size: 250 sqm

Client: Private

Photographs: Courtesy of Vértice Arquitectos

This house was designed in the first row, plot 5 in Lomas del Mar beach in Cerro Azul, 120Km. south of Lima. The plot is a rocky and sandy hill in a half curved shape that reaches 48 meters high above the sea level and drops steeply 8 meters in its lowest part. It has a 180° view to the Pacific Ocean to the south, and a panoramic view of the beach to the east and to the north.

The two main goals to develop the project were to fully exploit the best possible view to the ocean from the social area, as well as from the master bedroom, and to make the most of the plot of land. Two parallel volumes were designed, to accomplish the first objective, one of which leans on the other, which is 1.20 meters higher, to have the view of the sea. The volumes are joined by a main

circulation axis which ends in a swimming pool overlooking the beach.

To make the most of the plot big cantilevers were designed, since the useful area of the plot was reducing while the project was reaching the highest level. The first volume is found to the left of the entrance of the house, where most of the bedrooms have been located. The master room and the adjoining terrace are revolved 45° as to have the view of the sea. The second volume, to the right, locates the social and service areas in the first level. A family room and a guest room are located in the second level.

A two-story living and dining room area ends in the swimming pool and in a terrace perpendicular to it. The family room, in the second level, is spatially opened to the living and dining room in the first level, and has also an open view to the ocean. The staircase to the second level is made in natural concrete and flies over the kitchen separating this area from the living and dining room.

The materials used in the project have been: exposed concrete, white painting in the walls, stainless steel, tempered glass and granite stone. The latter has been used to cover the base on which the volumes rest, with the intention of separating these from the natural terrain. The pool is closed by a double face laminated glass in the external face that permits the same transparency to a view of the sea as the rest of the house.