

## 美国新墨西哥州，阿尔布开克，经典回顾：巴特普林斯的住宅与工作室 / Bart Prince



巴特·普林斯的私人住宅与工作室以超凡脱俗的外形坐落在美国新墨西哥州阿尔布开克的郊区。作为建筑师的居家与工作场所，这里真正体现了普林斯的主要设计原则，那就是形式与功能密切结合。这一设计理念使巴特·普林斯的设计在建筑界显得独树一帜。稍后是详细介绍。

从街上看，建筑物如同由色彩、形状与纹理随意交织而成，但每个设计决定都反映出了建筑师的深思熟虑。面向南方的玻璃立面可以进行被动式太阳能利用。室内巨大的水柱在白天得到加热，为整个房屋提供热水。





一条斜坡向下通往圆柱体工作室，工作室位于建筑前部附近光线条件较好的区域，这样既能控制噪音，又能控制室温。建筑的屋顶由一根中柱与四周扇形布置的结构管道支撑。这层顶板与外墙的结构混凝土支柱之间空出了一段距离，保证了顶部的充足采光。





另一条独立却相同的入口坡道通往主要的生活空间，功能房间之间纵横相连。两个一楼以一系上部楼层相连，其中有卧室、藏书室和工作空间。1990年新建了一座石塔，其低层作为藏书室，顶层作为图纸储存区域。

建筑师：Bart Prince

地点：美国新墨西哥州，阿尔布开克

项目年份：1984

资料提供：Bart Prince

摄影：Bart Prince



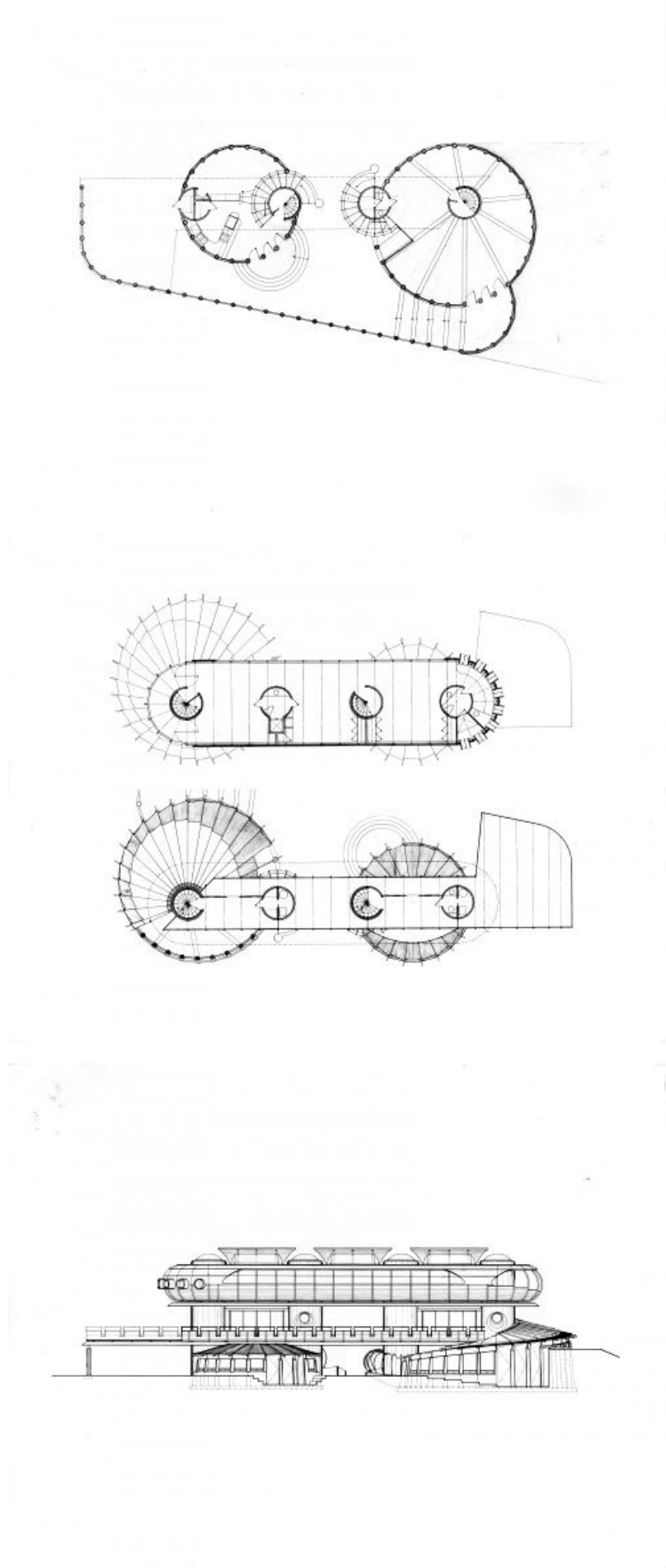






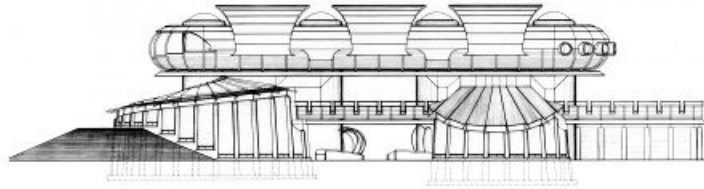






原文:

Nestled in the suburbs of Albuquerque, New Mexico are the otherworldly forms of Bart Prince's Personal Residence and Studio. As home and work place for the



architect the structure truly reflects Prince's main design principle that form so closely follows function. This ideal leads to the relatively uncommon architecture produced by Bart Prince. More after the break.

From the street it appears as a seemingly random intermingling of color, shape and texture but each design decision reflects an inner programmatic decision. Southern facing glazing allows for passive solar benefits. Large water columns on the interior are heated throughout the day to provide hot water for the building.

A ramp leads down into the cylindrical studio space which is set into a bermed area near the front of the building. This allows for both a measure of noise and temperature control. The roof of the structure is supported off of a central column with a fanning arrangement of structural pipes. This covering is raised off of the structural concrete supports of the exterior wall to allow for a flood of overhead lighting.

A separate yet equal entrance ramp leads to the main living space containing an interconnected network of purposeful rooms. The two first floor levels are connected by a series of upper stories which serve as bedroom, library and work spaces. A stone tower was added to the building in 1990 and serves on the lower level as a library and the upper level as a drawing storage area.

Architect: Bart Prince

Location: Albuquerque, New Mexico, USA

Project Year: 1984

References: <http://www.bartprince.com/bart.html>

Photographs: <http://www.bartprince.com/bart.html>