

## 日本，东京，K建筑设计事务所



建筑师：篠崎弘之建築設計事務所

地点：日本，东京

结构设计: Tatsumi Terado Structural Studio

承包商: Sinei Ltd

项目年代: 2011

摄影: Kai Nakamura





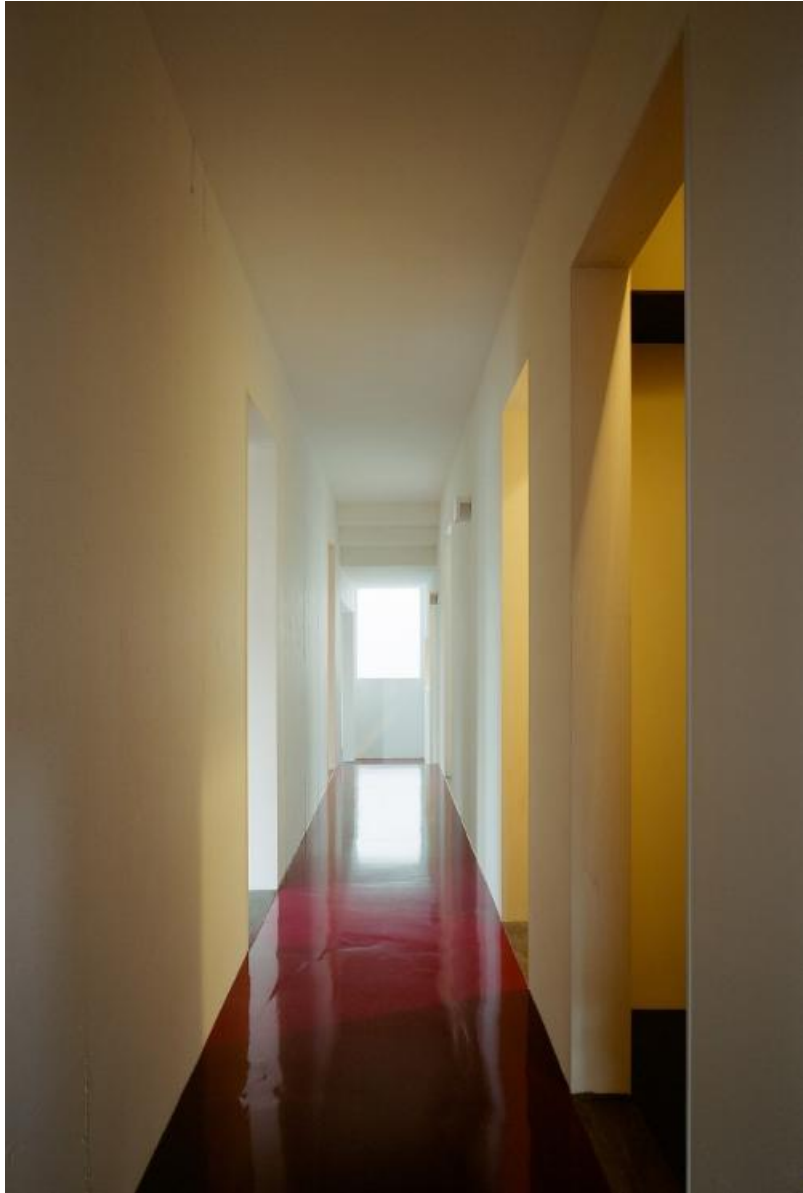
项目面积：161.47 平方米

基地面积：165.13 平方米

两层住宅小楼，位于一片住宅区之中。



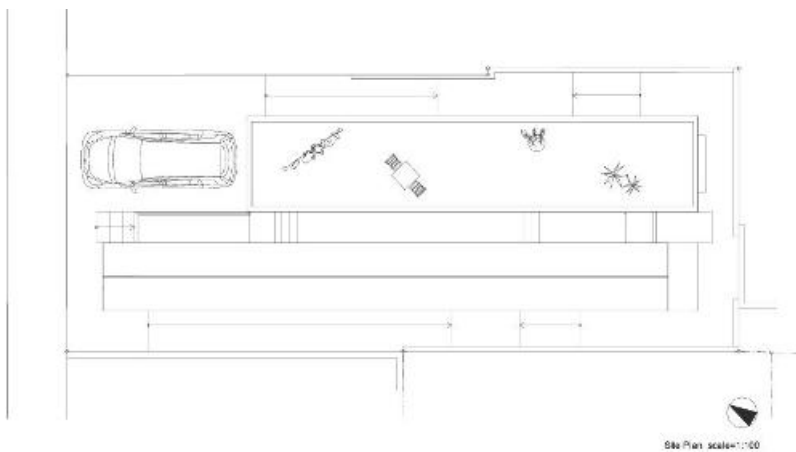
室内的空间并没有因为两个家庭单元而被分开，而是分为生活的空间和辅助空间。两种不同的空间用走廊联系起来，这种布局也表现在外立面上。（走廊的一边是生活的房间，另一半是辅助房间）。



1.8米宽、9米高的木制空间由小的横梁和胶合板组成墙壁和地板，构造出厨房，浴室和厕所空间。



另一方面，较大的生活空间，如客厅，餐厅和卧室由混凝土盒子构成。在修长的场地上，两个家庭通过长长的走廊，生活，互动。







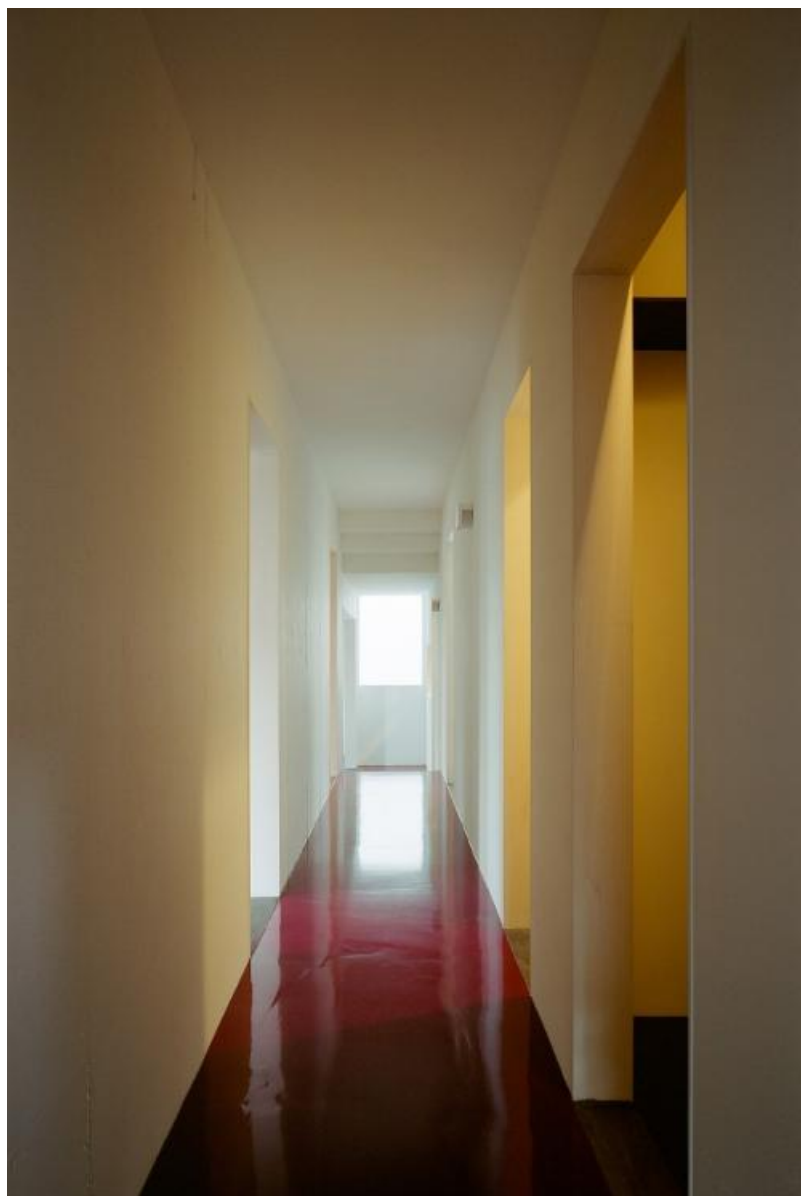


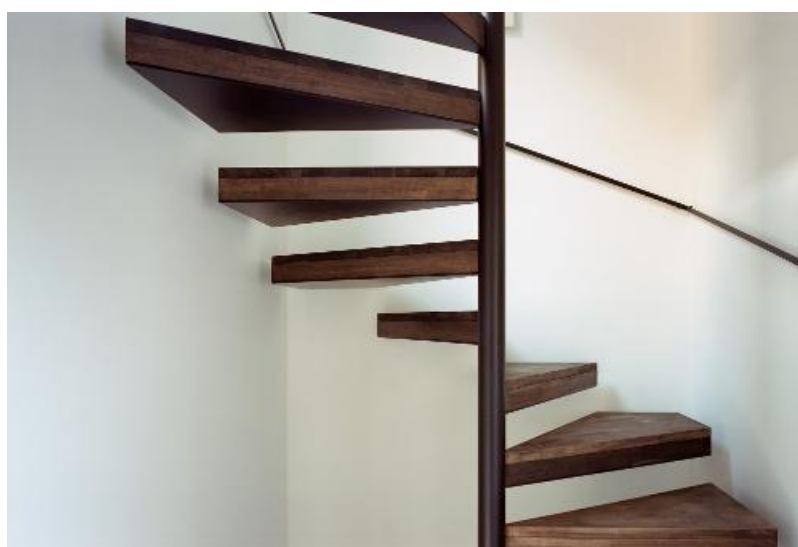






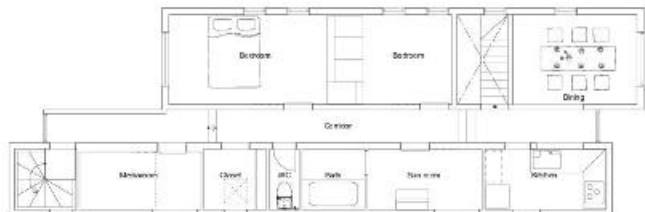




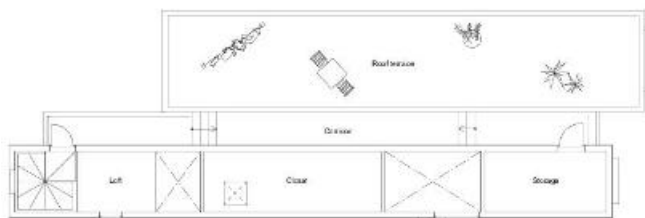




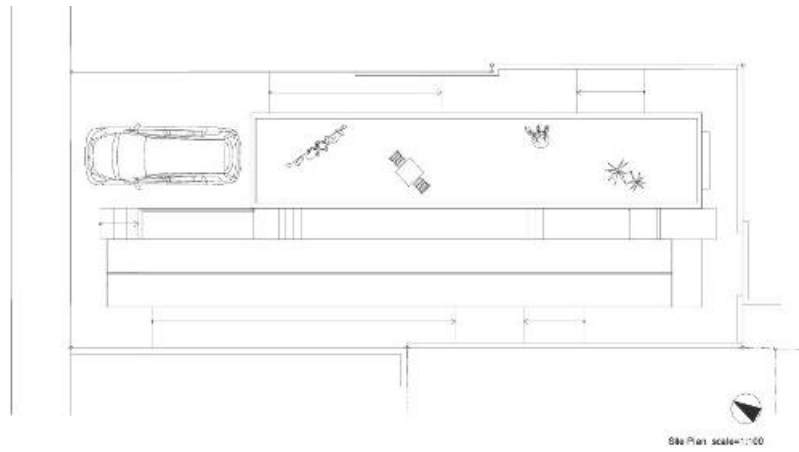
1F Plan scale=1:100



2F Plan scale=1:100



Roof Plan scale=1:100



原文:

Architects: <http://www.shnz.com/> Hiroyuki Shinozaki Architects

Location: Tokyo, Japan

Structure Engineer: Tatsumi Terado Structural Studio

Contractor: Sinei Ltd

Project Year: 2011

Photographs: Kai Nakamura

Architects: <http://www.shnz.com/> Hiroyuki Shinozaki Architects



Location: Tokyo, Japan

Structure Engineer: Tatsumi Terado Structural Studio

Contractor: Sinei Ltd

Project Year: 2011

Photographs: Kai Nakamura

Project Area: 161.47 sqm

Site Area: 165.13 sqm

<!--roulette-->

It is a duplex house in quiet residential area.

The space is not divided by those families but is consisted of living space and its supporting space for both families all together. Those two different spaces are connected by corridor which gives an impression of outdoor space.

1.8m wide and 9m high woodenspace by small beams and plywood necessarily make wall and floor for kitchen, bathroom and closet.

On the other hand, living space such as living room, dining room and bedroom are roughly collected in a concrete box. On the slender site, two families live and interacted by coming and going along the long corridor.