

# 西班牙，Oropesa del Mar新国民卫队军营 /espegel-fisac arquitectos



建筑师: espegel-fisac arquitectos

地点: 西班牙Oropesa del Mar, Spain

项目建筑师: Carmen Espegel Alonso & Concha Fisac de Ron

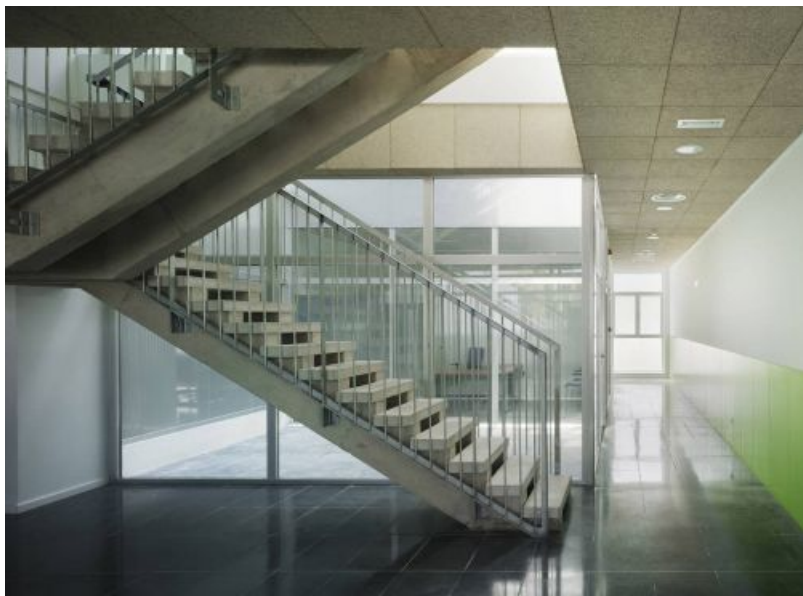
项目组: Cristina Hernández vicario, Laia Lafuente García-Valdecasas, Syra Abella Bule, Daniel Merro Jonhston, Federico Colella

项目面积: 4,146.29 sqm

项目年份: 2009-2011

摄影: David Frutos





建筑物分为两部分，组成了一个L形，界定出面向Plana大道敞开的入口广场，这个广场能以最自然的方式连接从市中心通往这里的道路。从广场进入是官方办公楼和住宅楼的常见做法，只

设置一处入口。广场铺着面砖，栽种了成排的棕榈树。



其中一座建筑容纳了官方大楼，另一座结构较为复杂，作为集合住宅。两栋楼都设有外部垂直交通核心，由电梯和楼梯组成，作为通往高层住宅的通道，也可以当作官方大楼的紧急出口。



住宅部分为求获得充足日光后被向后移至广场中。两个底层建筑中的房屋外形比较普通，挨着一条开放式的入口走廊。每栋楼都设计为L形，形成了私人庭院，在东南方向视野开阔，通风良好。

高层公寓面向南部和大海，通过外部交通核心进入，这也是两栋楼的交汇处，位于面向广场开放的走廊里。在住宅楼层，公寓的体块利用底层架空柱抬高。因此形成了一处抬高的室外公共空间，用于居民的娱乐和休闲区域。



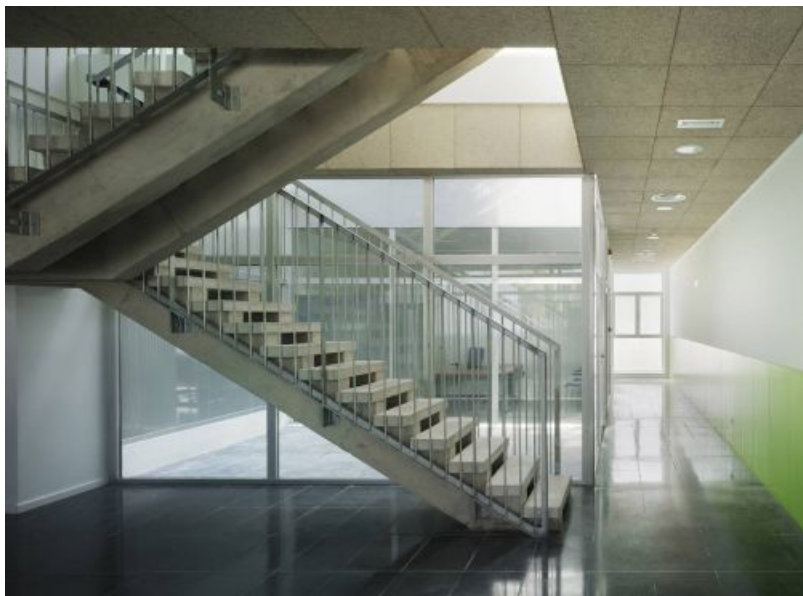
planta 1ª viviendas



planta baja viviendas y oficinas

官方大楼设计简洁而紧密，同样围绕庭院而设计，有利于一楼的公共区域更加便于出入。建筑设计参照了常见的地中海风格，体量简洁，面向庭院，有遮阳措施，还有屋顶平台。光线控制和隐私要求通过GRC格栅解决，这个格栅有助于解决两种类型建筑中的交叉通风问题，极大地优化综合楼的生物气候学特性。



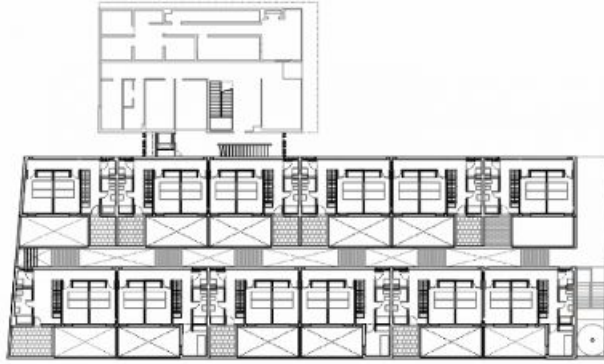




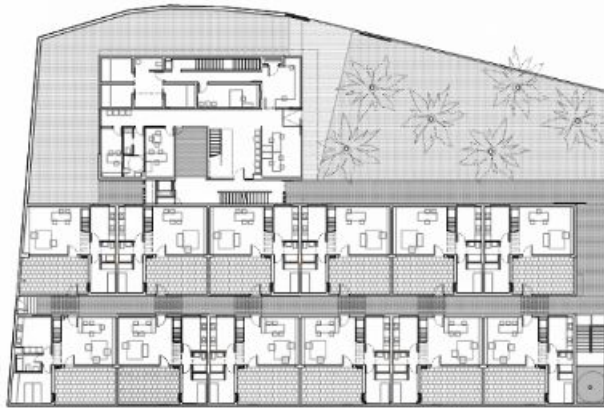




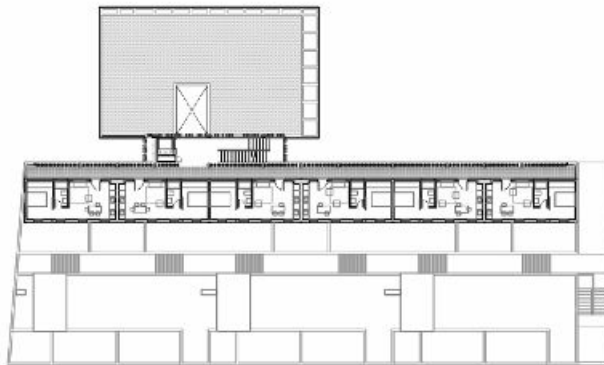




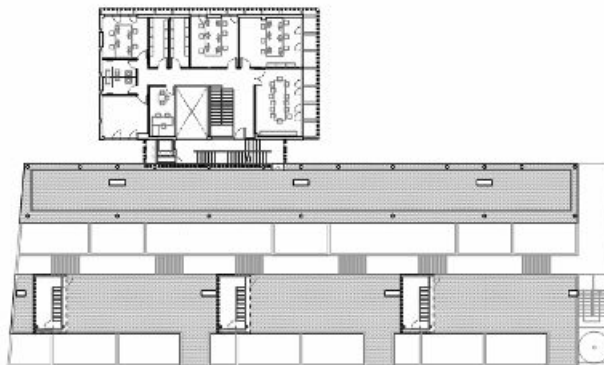
planta 1ª viviendas



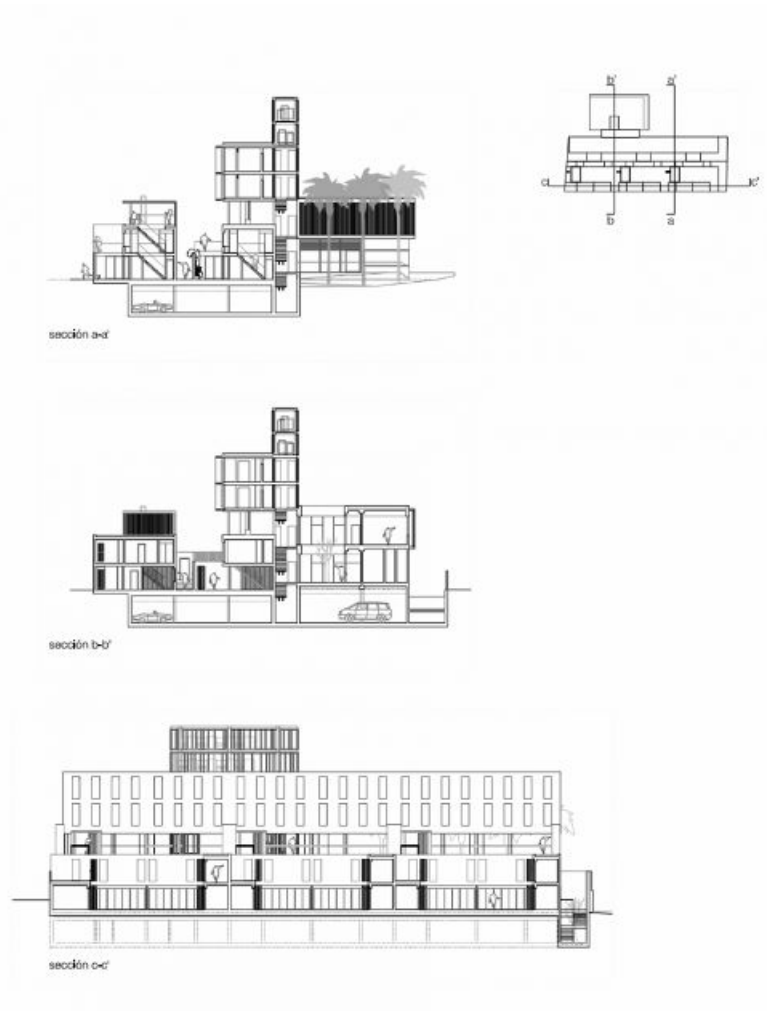
planta baja viviendas y oficinas



planta 3ª y 4ª apartamentos



planta 2ª terraza común y oficinas



原文:

Architects: <http://www.espegel-fisac.org/>espegel-fisac arquitectos

Location: Oropesa del Mar, Spain

Project Architects: Carmen Espegel Alonso & Concha Fisac de Ron

Project Team: Cristina Hernández vicario, Laia Lafuente García-Valdecasas, Syra Abella Bule, Daniel Merro Jonhston, Federico Colella

Project Area: 4,146.29 sqm

Project Year: 2009-2011

Photographs: <http://davidfrutos.com/>David Frutos

The building is organized in two pieces, shaping an L that defines the access square opened to Plana Avenue, being the natural way to the roads that are approaching from the urban center. The access from the square is common to the official buildings and housing, setting up one only entry point. The square is paved and gardened with palm trees.

One of the pieces accommodates the official buildings; the other, more complex, the housing. Both are joined by an exterior vertical communications core, formed by lift and stairs, and working as the access to the high level housing and also as an alternative and emergency way for the official part.

The residential part gives its back to the square, looking for the sun. The familiar houses are organized in the two low levels, two separated lines by an opened access corridor. Each house is disposed as an L, generating a private courtyard to which views and ventilation are directed to, with a southeast orientation.

To the high floors apartments, faced to the south and the sea, the access is through the exterior communication core that is the joint of the two pieces located in the corridor opened to the square. Above the housing line, the apartment block is elevated upright by pilotis. Thereby, an external elevated public space is generated for recreation and leisure areas of the residents.

The official part is organized in clearness and compactness, equally disposed around a courtyard, favoring the location of the public uses in the ground floor, more accessible. The architecture makes reference to the usual mediterranean character of the place, simple volumes, well faced courtyards, solar protections and flat roof. The light control and the privacy are solved by GRC lattice that helps the cross ventilation in both type buildings optimizing the bioclimatic behavior of the complex.