

法国，图尔，Monconseil养老院/ Atelier Zundel + Cristea



建筑师： Atelier Zundel & Cristea

地点： 法国，图尔

项目面积： 4,500 sqm

项目年份： 2007-2010

摄影： Stephane Chalmeau



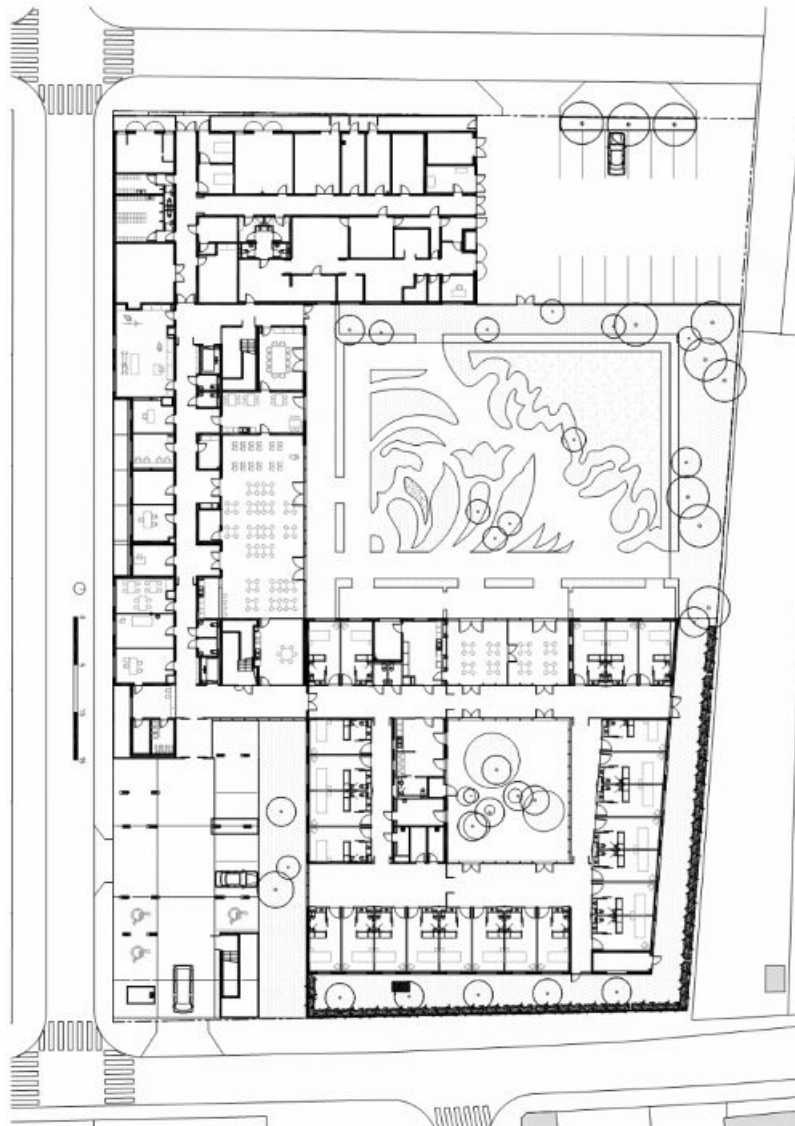


这家养老院建在法国图尔市北郊的Monconseil城市开发区（法国称ZAC），是该地区的头一批建筑物之一。开发区的设计要求是力争在该地区建造一批完美的建筑物。本项目刚开始根据设计规范的要求，整个楼内共设有81张床位。若一丝不苟地按照规范进行设计，我们会得出一套围绕内院而建造的平面布局，这样与该地区其他建筑就没什么区别了。

为尝试与该地区主要的ZAC设计规范相互协调，我们提出了一套折衷方案。这是一座平面呈U形的建筑物，由三大部分组成。主体由三层楼构成，向外延伸至南部与北部边界。楼上包含两个



传统住宅单元，而其地面层为公共生活领域。在靠近两条街道的街角处，建筑物部分建立在支柱上，从而在地面层为公众留出了一个入口区。第二部分仅为单层，延伸至西部边界，这里也需要与其他建筑对齐。除了中央厨房之外，这里还容纳了所有的技术设备，公共庭院的存在起到了延伸的作用。最后一部分较少受到对齐要求的限制，这里有特殊设计的地面层，专门留给阿尔茨海默病老人居住，临街一侧向后退了一段距离，作为安全花园。



在一楼俯视下面的街道，可以看到第二部分的建筑物。楼上的所有房间都受到了后退设计的保护（阿尔茨海默症单元）。所有的公共生活空间都面对着巨大的内部花园。通向房间的走廊通风良好，每四五个房间就有一条自然采光的通道，并在最后构成了一条名副其实的大道，在这

些光线充沛的地方，刚好可以举办各种活动，也能欣赏到花园中的美景。每个赏景点都形成了一个小小的休息室，便于开会使用。

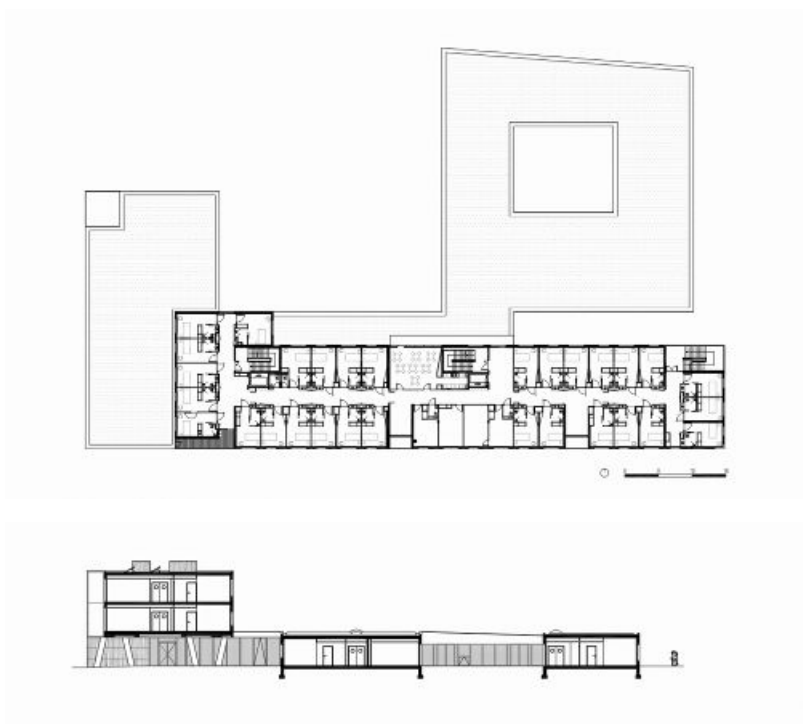


立面为预制混凝土构成，我们在立面外层采用了一层植物花纹图案，从而为建筑物的外观创造了一种生动有趣的特色。







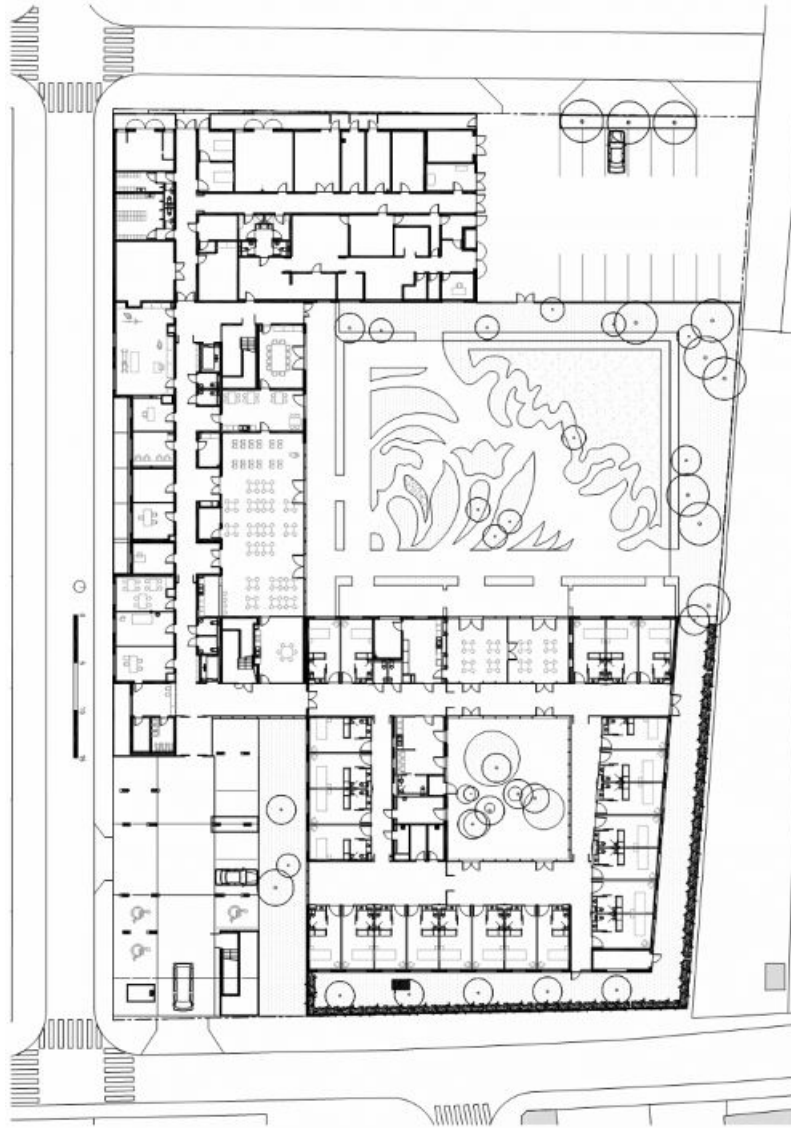


原文:

Architects: <http://www.zundelcristea.com/> Atelier Zundel & Cristea

Location: Tours, France

Project Area: 4,500 sqm



Project Years: 2007–2010

Photographs: <http://www.stephanechalmeau.com/> Stephane Chalmeau

This retirement home is being built in Monconseil’s Urban Development Zone (ZAC in France), in the northern suburbs of the city of Tours, where this building will be one of the first footprints in the area. The project, which consists of 81 beds spread across three units, was defined from the beginning by specifications that sought to take up and organize an ideal amount of the site’s surfaces. Respecting these specifications to the letter would have led us to a ground floor organization around internal courtyards spread over the entirety of the site.

To try and reconcile these demands with the ZAC regulations the area was subject to, we proposed a compromise. The result of which is a building in the shape of a “U”, composed of three parts. Its main body, made up of three floors, extends out to the alignments required at the southern and eastern boundaries. Its upstairs floors contain the two units for traditional accommodation, while its ground floor contains communal living areas. It is partially built upon stilts, at the corner of two streets, so as to free up, on the ground floor, an entrance area for the public. The second body of the building, made up of a ground floor only,

extends to the western boundary, where alignment was also required. It houses all the technical premises, along with the central kitchen, and is extended by a service courtyard. A third and last body, less restricted by requirements of alignment, unfolds in a single, ground floor to house the Alzheimer units, and contains secure gardens, being set back in relation to the street.

On the ground floor overlooking the street secondary premises can be found. The rooms on all upstairs floors are protected by a set back (Alzheimer unit). All the communal living spaces are placed facing the large internal garden. The corridors leading to the rooms are deliberately well ventilated, becoming naturally lit lanes every four or five rooms, and in the end compose a veritable avenue, where events take place within the generous amounts of natural light, and where there are comfortable views of the garden. Each view toward the outside creating a small lounge conducive for meetings.

The facade is composed of prefabricated concrete, over which we applied a plant pattern, in order to produce a vibration in the surface.