

# 瑞典，马尔默，Hytten 4住宅楼/ Metro Architects



建筑师: Metro Architects

地点: 瑞典马尔默, 西港

客户: NCC living, Malmö

面积: 5000 sqm

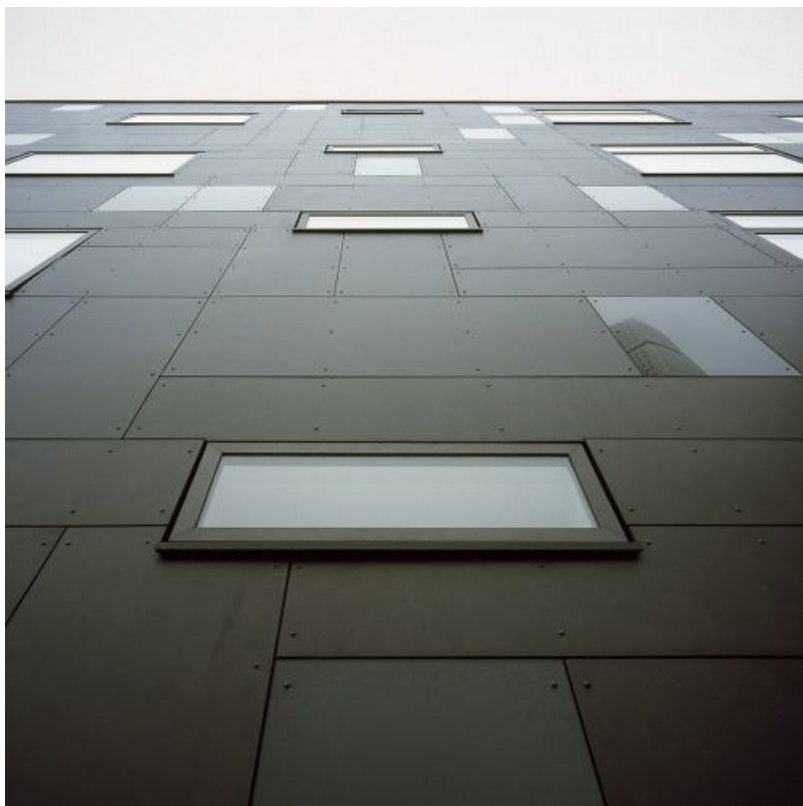
年份: 2006

摄影: Rafael Palomo





Hytten 4住宅楼位于Bo01住宅区总平面规划的东北角。从平面图上看，住宅楼具有三个不同的方位，属于建筑综合体。

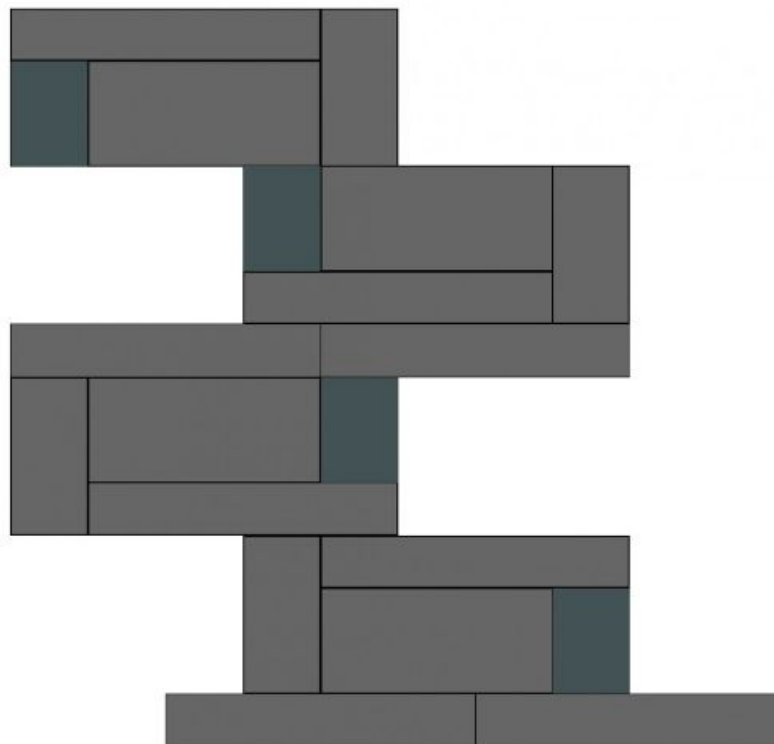
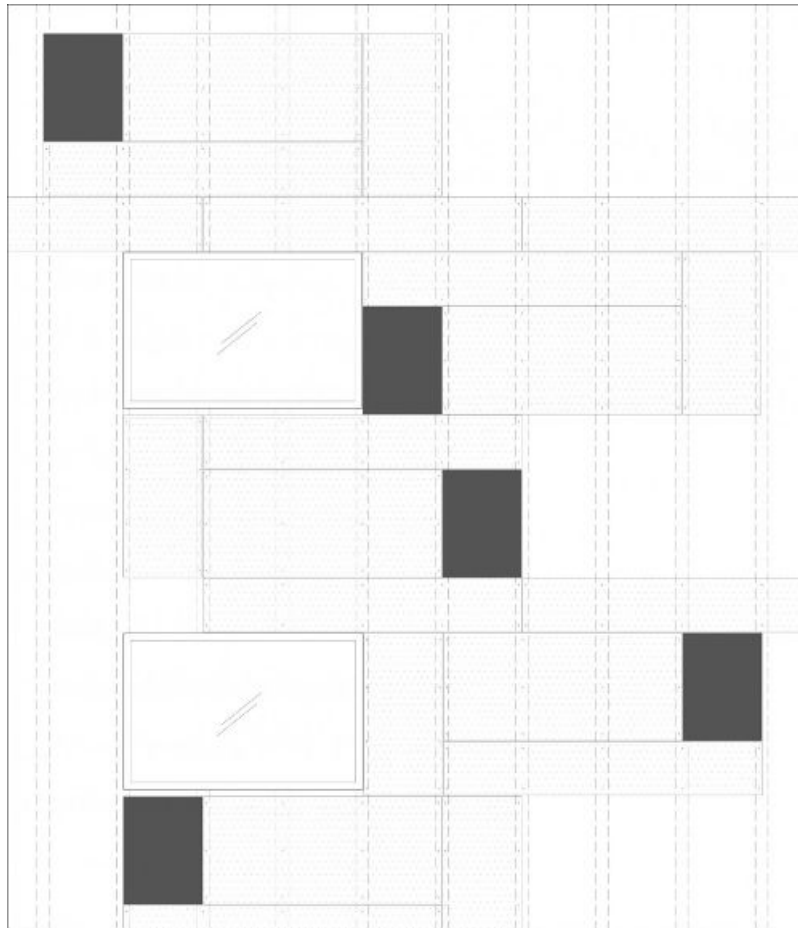


该建筑物的结构乍看上去与经典的城市建筑别无二致，但是外观的设计鲜明，而室内设计更是展现出隐秘的生活方式。大跨度的公寓，以及排屋与小型公寓之间的对比赋予建筑物更加丰富的内部生活空间。

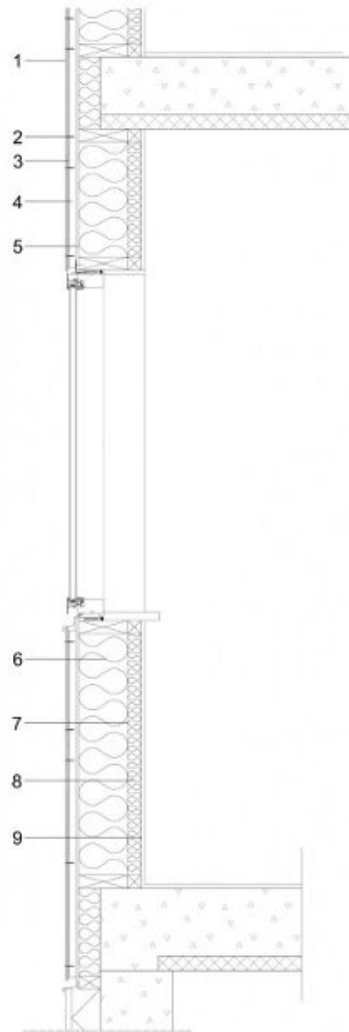


建筑的外观适应城市环境，由连贯的黑色壳体构成。立面为水泥镶板和富有光泽的黑色玻璃窗，镶板与玻璃窗相互映衬，创造出丰富的表面变化。

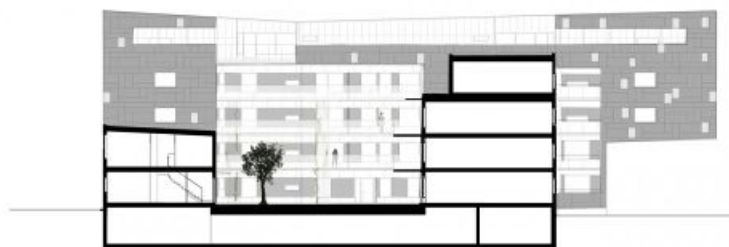
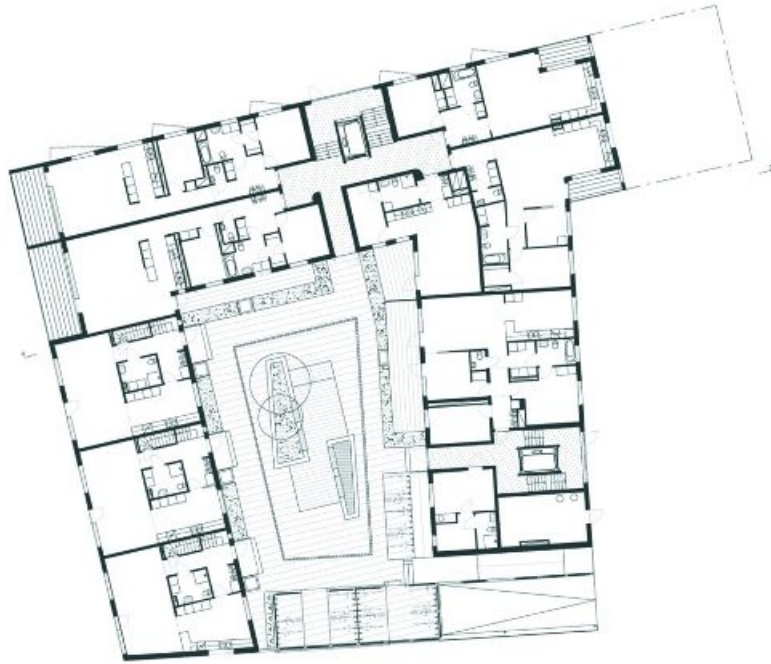
在庭院与安装有大窗户的宽敞阳台的设计上，情况就截然不同了。此处的立面由白色水泥镶板和桃花心木胶合板构成，不但能反光，还能散热。由于庭院较小，所以采用了类似室内的设计，如同一个小小的核心，也就是公共中庭。



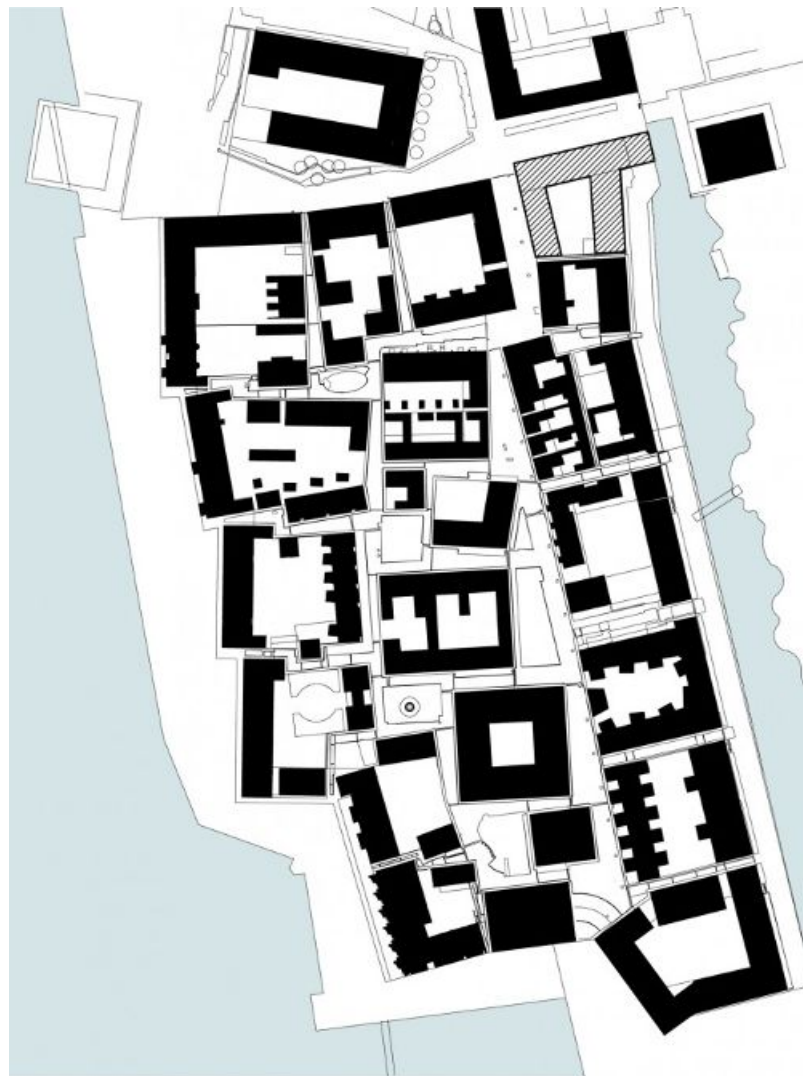
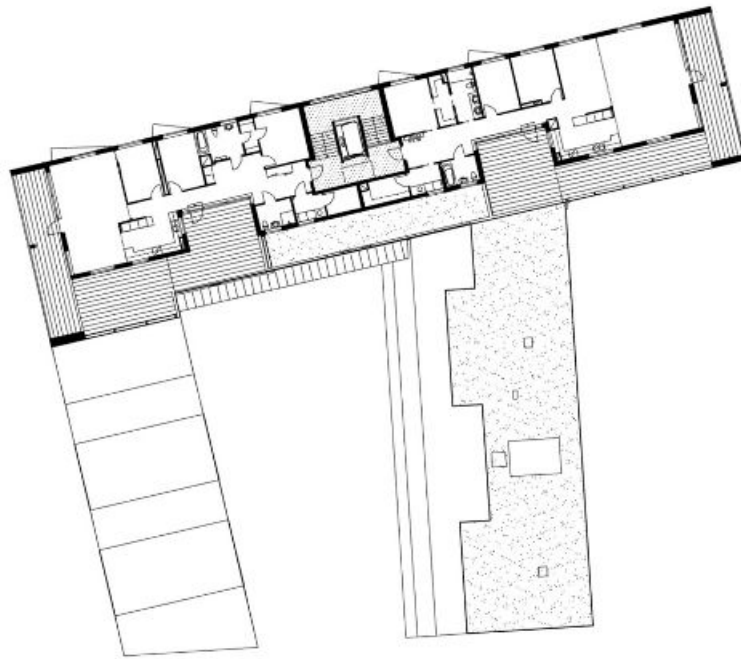




- 1 Fibre reinforced cement panels: Swisspearl Carat, Anthrazit 7025
- 2 4,8/38 mm Stainless steel saucer-head screws
- 3 EPDM joint backing strip
- 4 28/95mm vertical battens
- 5 9 mm structural board
- 6 45/170 mm wooden stud frame, thermal insulation
- 7 0.2 mm air and vapour barrier
- 8 45/45 mm horizontal battens, thermal insulation
- 9 12.5 mm gypsum board







原文:

Architects: Metro Architects

Location: Västra Hamnen, Malmö

Client: NCC living, Malmö

Area: 5000 sqm

Year: 2006

Photographers: Rafael Palomo

The dwelling unit Hytten 4 poses as the north east corner of the complex plan of the living fair Bo01. The consequence of the plan, with three different construction rights within the unit, is a complex building volume.

The building has an urban structure like a classical city block, with an obvious exterior and interior which manifests a non exposed, interior living. A great span of apartment sizes as well as the contrast between the row houses and the smaller apartments gives the building a rich inner life.

The exterior, which meets the city, consists of a cohesive black shell. The façade is a composition of cement panels and shiny black glass sheets which together with the windows creates variation and depth.

Towards the courtyard and the large balconies with great windows is the situation different. The façade consists here of white cement panels and mahogany plywood which radiates light and warmth. The courtyard has, because of its small measurements, gotten an interior design like a small core - the common atrium.