

# 西班牙，瓜迪克斯37户公寓楼 / Studio Wet + Antonio G. Liñan



建筑师： Studio Wet + Antonio G. Liñan

地点： 西班牙格拉纳达瓜迪克斯

建筑师负责人： Daniel Montes, Jose Gómez Mora, Antonio G. Liñan

项目面积： 4,636 sqm

项目年份： 2012

摄影： Fernando Alda





合作者: Daniel Yusty, Arquitecto Técnico (Mediciones), Francisco León Muñoz, estudiante. Manuel Sánchez, Manuel Caba (Aparejadores, Dirección Obra).

客户: Empresa Pública de Suelo de Andalucía

公司名称: Jubuconsa

预算: 2,9Mill €



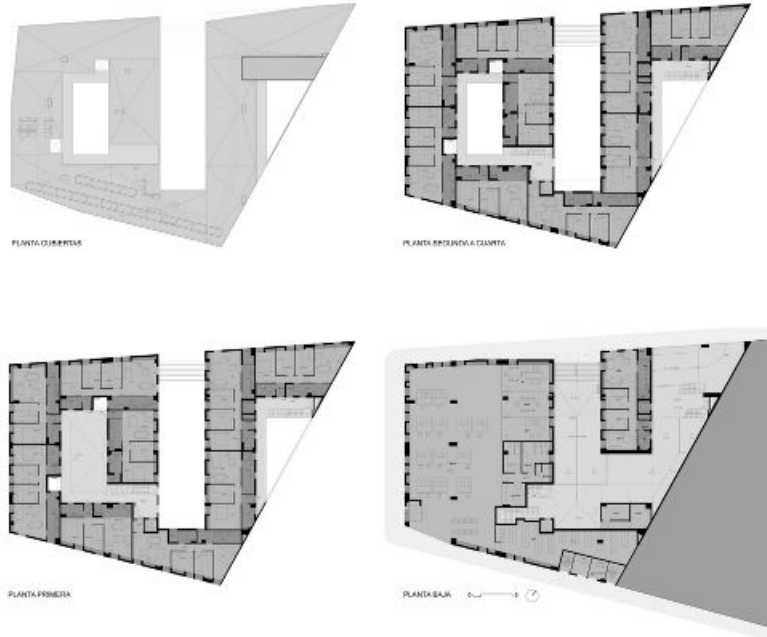


瓜迪克斯从地质角度来看位置独特，它位于内华达山脉脚下、由黏土形成的山谷之上，这个山谷在地中海后退的过程经过不断冲刷与撞击，形成了目前对于项目的限制条件。这些情况已经影响了人们的生活和在这个地区的建造方式——从所谓的“casas-cueva”（洞穴改造成住宅）到在著名的大教堂中大量使用黏土砖。本案社会住房项目也受此影响，通过大型折叠表面形成了多面的、极具雕塑感的体量。

建筑体量被挖空，仿佛形成了一个洞穴，从而使自然光可以雕刻和塑造这个空间。公寓楼被分成三个不同的条形区域：外面的一条（立面）通过深深的窗户过滤阳光，这个条形区域深度很大，为公寓创造了储存空间。中间的条形区域容纳了公寓所有不同的房间，也可以创造一个没有单独房间的连接空间。



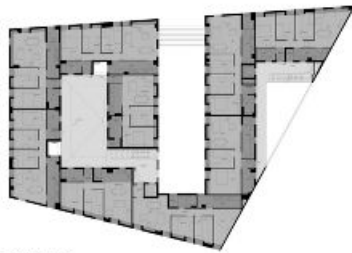
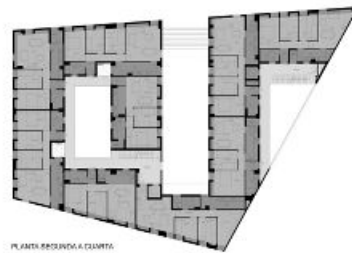
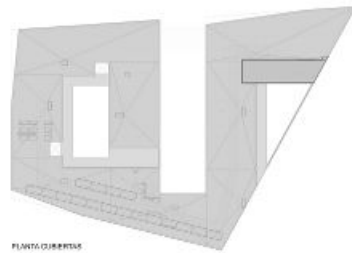
最后一个条形区域作为配套设施，容纳了厨房和浴室，可以满足生活的不同活动要求。建筑的一层被挖空，减少了公寓数量，连接起不同的内部上空空间，以此在建筑内形成了连续的、具有雕塑感的空间。

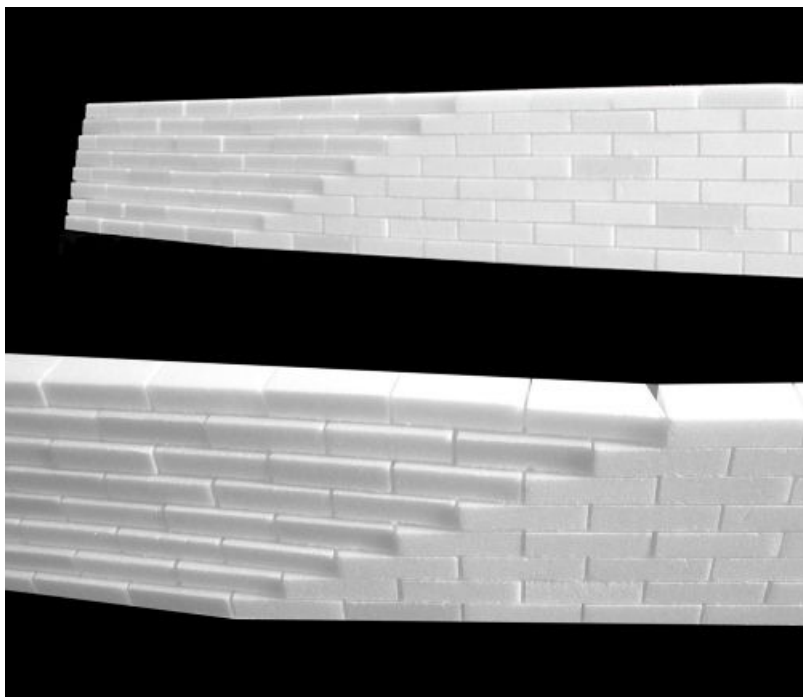
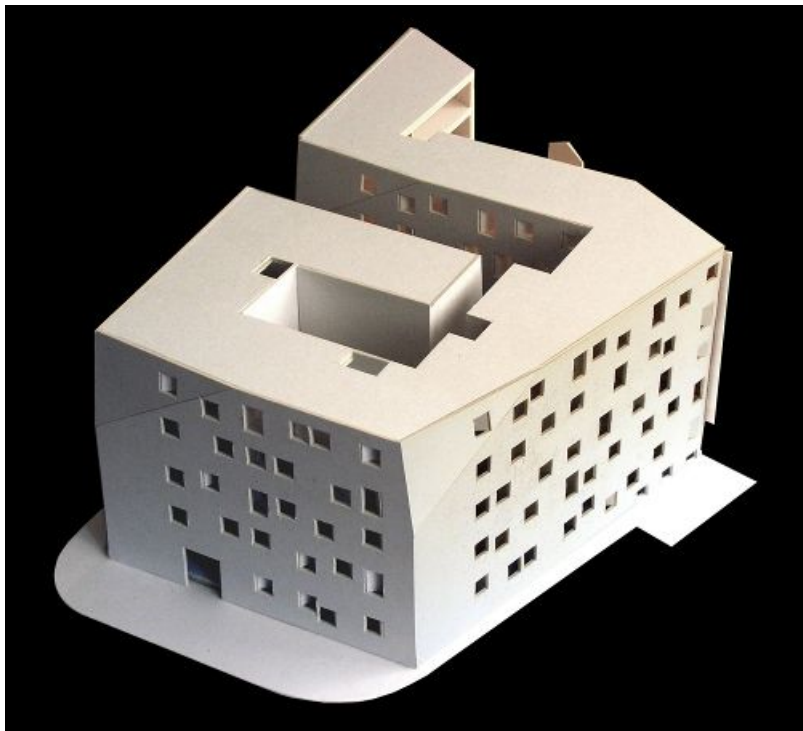
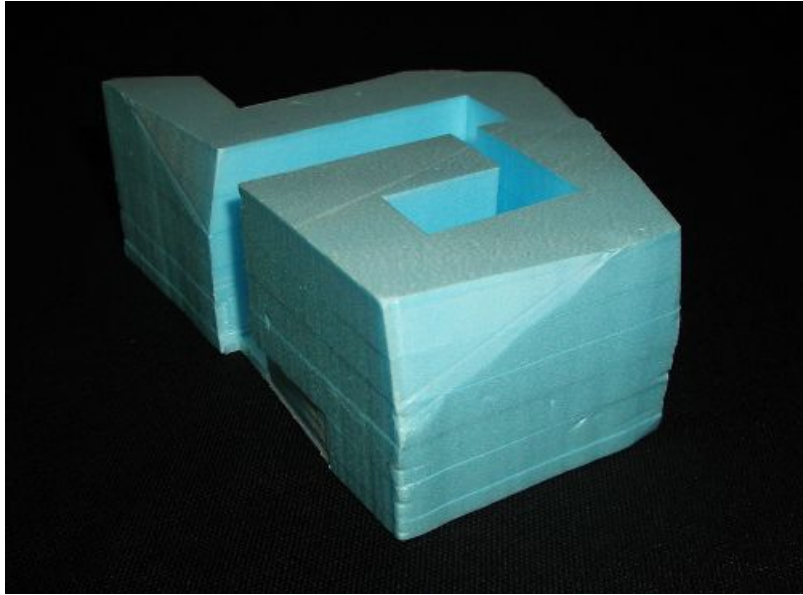












原文:

Architects: [Studio Wet](http://www.studiowet.com/) + [Antonio G. Liñan](http://www.archdaily.com/tag/antonio-g-liñan/ "Posts tagged with Antonio G. Liñan")

Location: Guadix, Granada, Spain

Architect In Charge: Daniel Montes, Jose Gómez Mora, Antonio G. Liñan

Area: 4,636 sqm

Year: 2012

Photographs: [Fernando Alda](http://www.fernandoalda.com/)

Collaborators: Daniel Yusty, Arquitecto Técnico (Mediciones), Francisco León Muñoz, estudiante. Manuel Sánchez, Manuel Caba (Aparejadores, Dirección Obra).

Client: Empresa Pública de Suelo de Andalucía

Company: Jubuconsa

Budget: 2,9Mill €

Guadix is located in a singular placement from the point of view of its geology, at the foot of Sierra Nevada Mountains, and over a valley formed by clay, which has been scratched and drilled by the Mediterranean Sea on the process of leaving this land to its current limits. These facts have affected the way people has lived and built in this area, from the so-called “casas-cueva” (caves converted into houses) to the wide use of clay-bricks in its well known cathedral. Thus, this social housing proposal stands on a faceted and sculpted volume through large folded surfaces.

This volume has been hollowed out as if making a cavern, and therefore to allow the natural light to carve and mould the empty space. The apartments are split into three different stripes: The outer stripe (facade) works as a filter for sunlight using deep cells for the windows. The deepness of this stripe creates a storage area for the apartments. The intermediate stripe holds all the different rooms of the apartments. It would be possible to create a continuous space with no individual rooms.

The last stripe works as a supporting facility, where kitchens and bathrooms can satisfy the proper activities of living. The ground floor has been hollowed, eliminating some apartments to connect the different internal voids, in order to perceive a continuous and sculpted space inside the building.