

法国，蒙彼利埃，15户住宅楼/ MDR Architectes



建筑师：MDR Architecte

地点：法国蒙彼利埃

竣工时间：2011

摄影：Courtesy of MDR Architectes

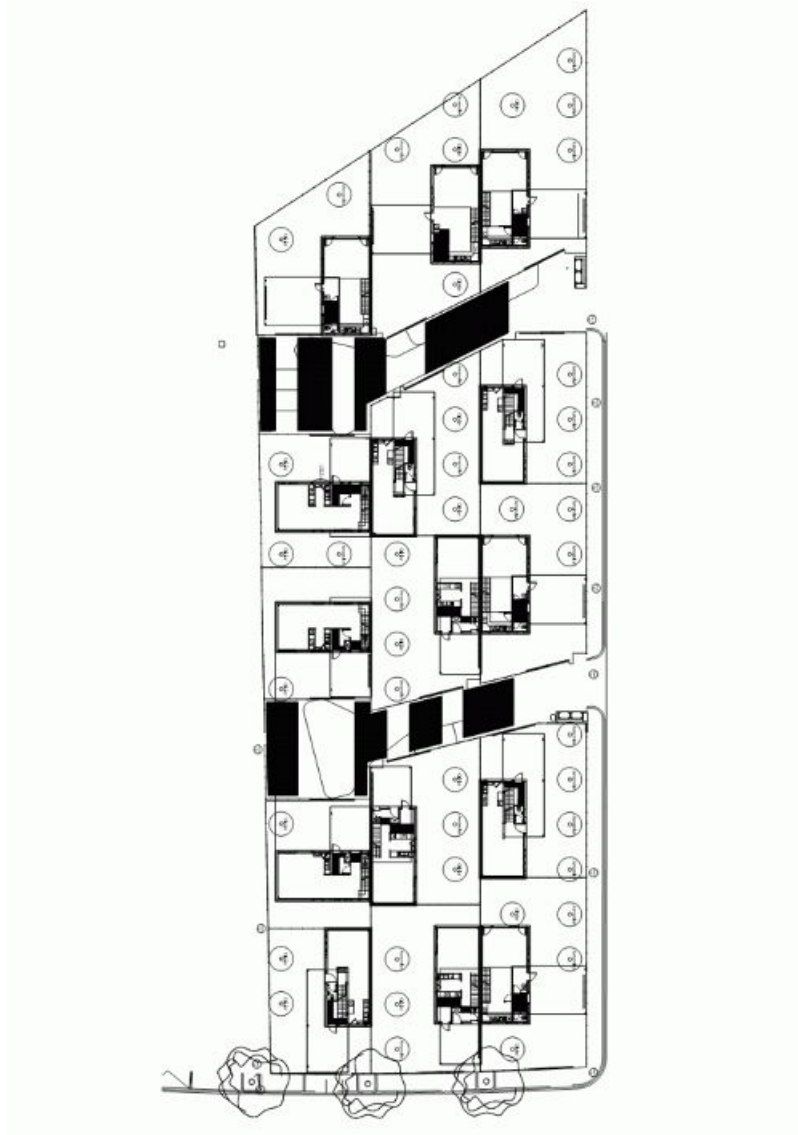
这是位于法国蒙彼利埃一个新住宅区内的15户住宅楼项目。每户住宅的一层都是一个巨大的混凝土块。住宅起居室部分面对私人花园开放。楼上是卧室和浴室，这些轻型体量外层覆盖了木材，体量的朝向使这些盒式结构可以设置大型窗户。植物的选择尊重了地中海地区的气候，创造了植物遮屏和自然遮阳系统。

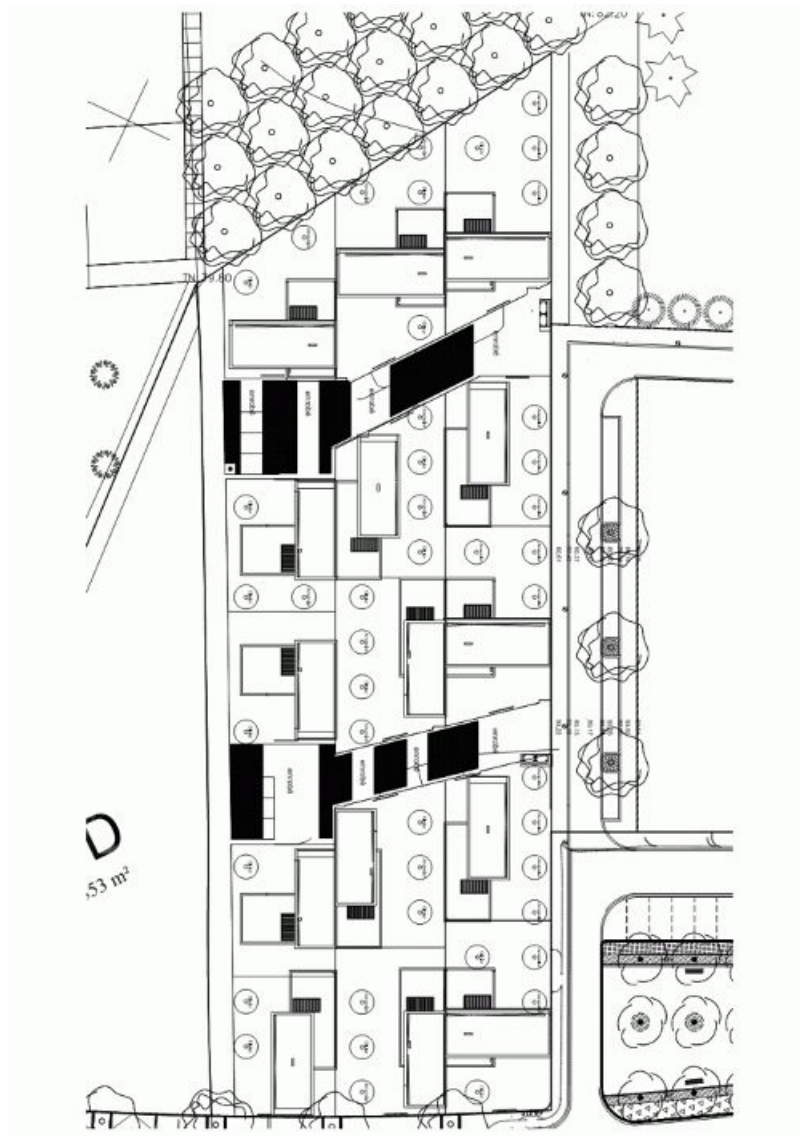












原文:

Architects: MDR Architecte

Location: Montpellier, France

Completion: 2011

Photographs: Courtesy of MDR Architectes

Is a 15 houses project in a new neighborhood in Montpellier (France). The ground floor of each house is a massive concrete block. Opened on a private garden this is the living part of the house. In the upper bloc are rooms and bathrooms. These volumes, lighter, are clad with wood and its orientation allows opening these boxes with large windows. The greenery has been chosen to respect the Mediterranean climate, to create vegetal screens and natural shadow systems.

