

秘鲁，利马，柏拉图塔楼 / Tammo Prinz事务所

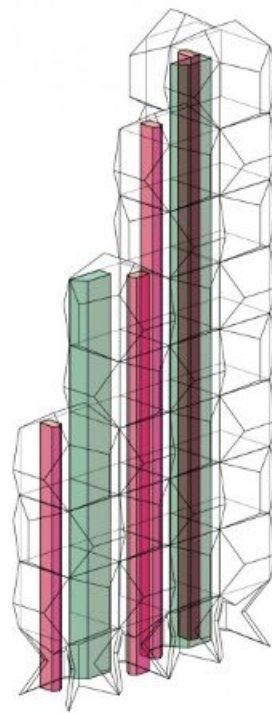


Tammo Prinz事务所 参与了秘鲁利马的一个新住宅塔楼设计竞赛，参赛方案利用柏拉图式的建筑体创造了生动的室内外空间。

正十二面体混凝土结构促进了设计的形成，其中策略性地设置了较小的立方体结构，为日常生活创造了众多空间。室内外空间品质之间的关系创造了一系列独特的空间，它们可以作为室内空间的延伸，也可以作为类似阳台的室外区域。



STRUCTURE



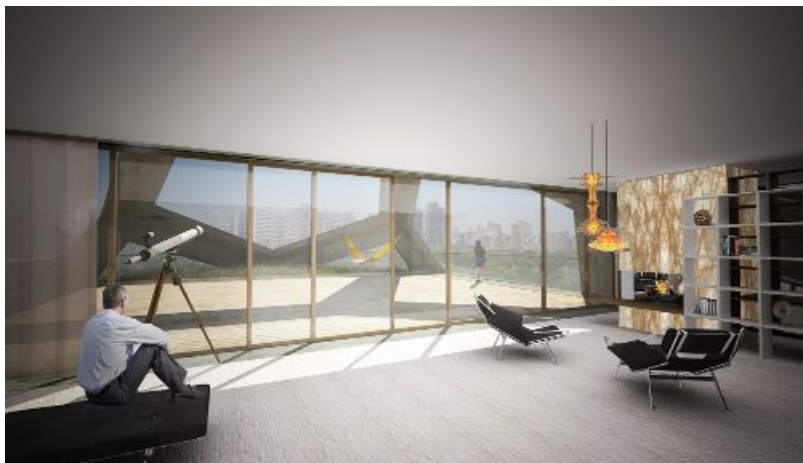
CORES

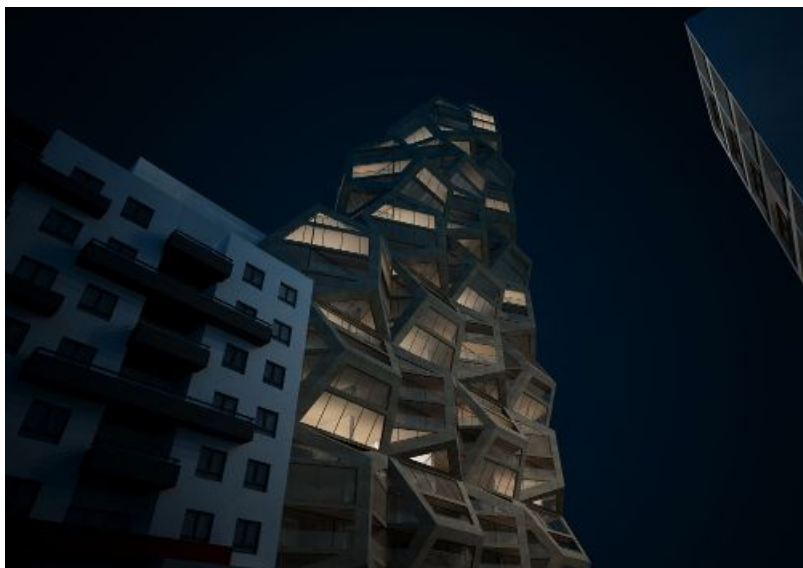
这个多层建筑方案中还设计了一个大型下沉公共广场，解决了利马需要更大的公共空间的问题。建筑下面几层宽敞的上空空间可以让自然光涌入多功能空间，其中包括一个阶梯式圆形剧场。交错排列的彩色台阶向下延伸至广场，弱化了混凝土结构的冰冷，邀请路人与空间互动。

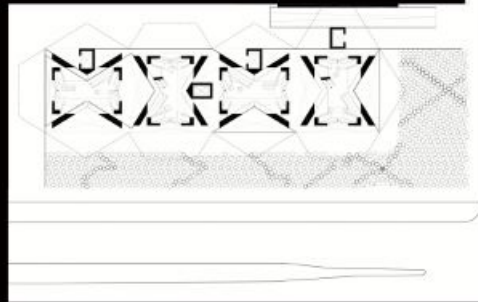


由于正十二面体很容易就能被切割成两半形成平坦的侧面，因此Tammo Prinz事务所的建筑师希望能将这种模块化的柏拉图设计技术运用到未来的众多住宅项目中。请大家留心观察，在不久的将来，我们很可能会看到更多这种几何形式的建筑出现。

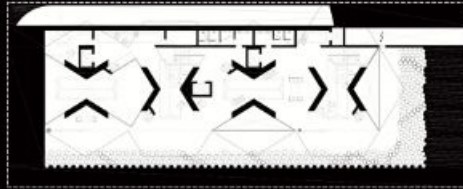




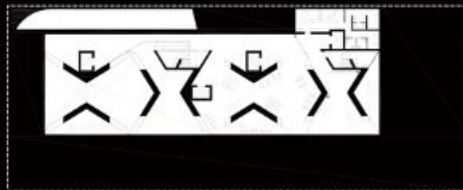




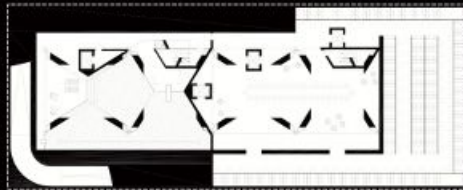
„BRIDGES“ FLOOR 0, SCALE 1/400



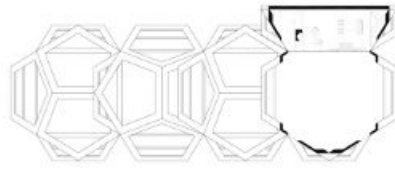
LOBBY FLOOR -1, SCALE 1/400



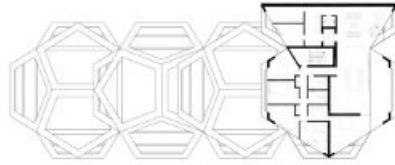
GYM FLOOR -2, SCALE 1/400



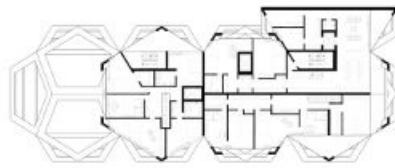
SWIMMING POOL AND EVENT SPACE, FLOOR -3, SCALE 1/400



PENTHOUSE, FLOOR 32
SCALE 1/100



PENTHOUSE, FLOOR 31
SCALE 1/100



APARTMENTS, FLOOR 14
SCALE 1/400

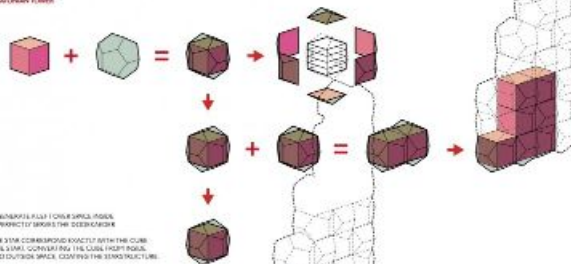


APARTMENTS, FLOOR 15
SCALE 1/500

PLATONIAN BODIES

TWO OF THE FIVE PLATONIAN BODIES (CUBE AND DODECAHEDRON) ARE CHOSEN FOR THEIR CHARACTERISTICS THAT THEY PERFECTLY FIT INTO EACH OTHER. IN THIS CASE, PLATONIAN SPACE THAT IS EASY TO HANDLE FOR APARTMENTS... CAN BE TAKEN AS INNER SPACE, THE OTHER AS OUTSIDE ADDITION. THE FACT IS A PERFECT SQUARE, EASY TO HANDLE FOR APARTMENTS. THE SECOND CAN BE EITHER ADDED TO THOSE OR BE SEEN AS WALL CONES.

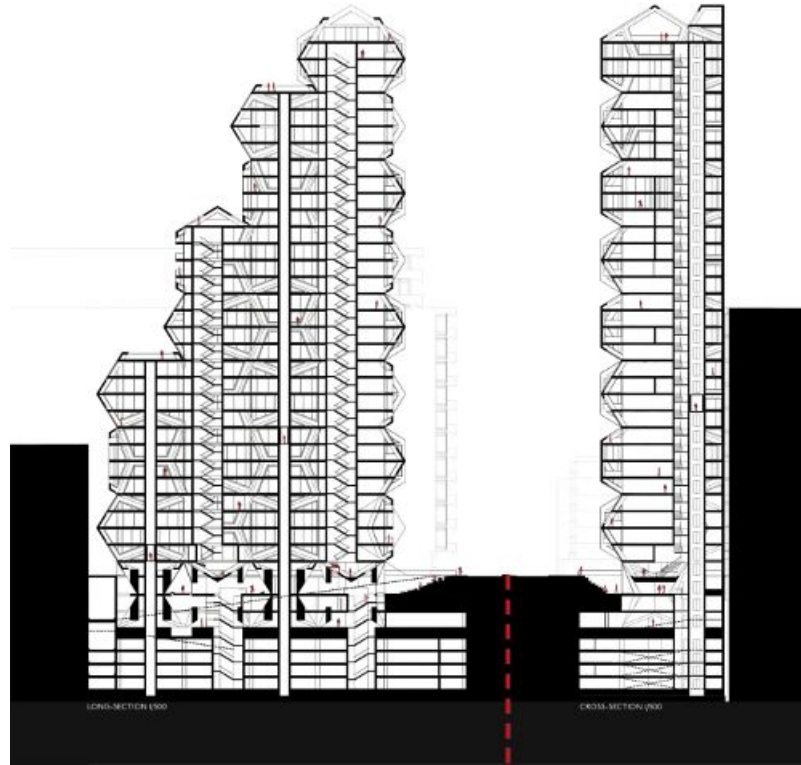
STACKING THEM INTO TOWERS... **THE PLATONIAN TOWERS**

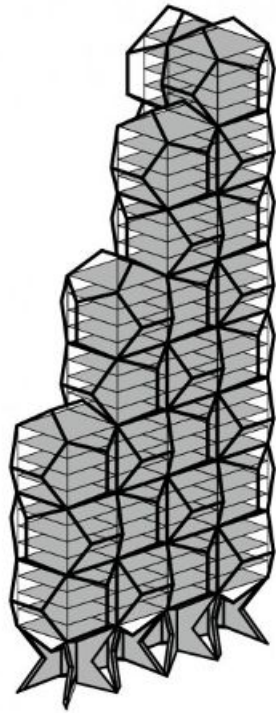


BY CONSIDERING HOW TO USE THE REMAINING FIVE PLATONIAN BODIES, THEY ARE THE SHAPES OF ALKYL AND PERFECTLY MATCHES THE DODECAHEDRON AS CARRIERS & BUILDERS. IN ADDITION, THE BODIES ARE OF THE SAME COMPLEXITY AS THE CUBE. THEY CAN BE EITHER ADDED TO THOSE OR BE SEEN AS WALL CONES WITHIN THE DODECAHEDRON INTO OUTSIDE SPACE, CARRYING THE ZERO STRUCTURE.

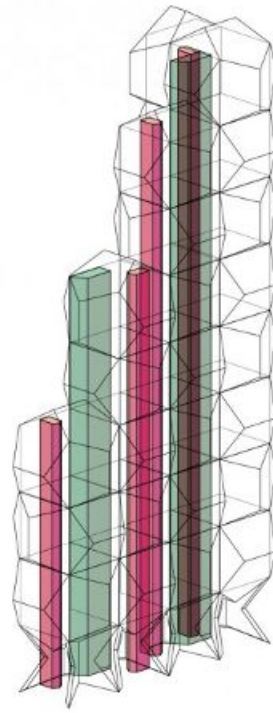


SPATIAL CONCEPT





STRUCTURE



CORES