

# 摩洛哥，卡萨布兰卡，Connecting Riads住宅 综合建筑/ AQS0 Arquitectos



Connecting Riads住宅综合建筑由AQS0 Arquitectos设计，是一个蜿蜒绕过两个半公开庭院的连续体量，适应场地的不同条件，结合了家庭氛围与城市化的外观。场地每一侧独特的环境都决定了建筑的简单姿态，立面的高度各不相同，屋顶由阶梯式的绿色露台构成，形成了令人印象深刻、现代感十足的外形。以下是更多项目图片及建筑师的描述。



该项目位于卡萨布兰卡Anfa区的东部，在市中心的一个历史地区，附近是将要拆除的旧机场。地块介于格兰剧院大道和一个由低矮建筑群和城市公园组成的居民区之间。设计方案在概念上作为一个与周围街道对齐的连续体块，缠绕在两大“riad”外侧。



建筑以这种方式构建，为这条大道带来一种城市化的特色，也减少了相对于另外一侧的规模差距。高耸的体量让人们在公寓中就能欣赏公寓的美景。建筑立面采用了两种不同的策略：外层表皮面对最为公开的环境，因此设计得很含蓄、正式，而内部面对私家庭院，设计得很活泼，也有家庭氛围。



外侧为长阳台，由推拉格子板封闭，而内侧为白色平坦表面，仅设计了长窗和巨大的外伸阳台。这些构件规则地排列在墙上，就像安达卢西亚式庭院中的花盆。建筑体块中也有多处巨大的开口，作为绿色露台，既保持良好的通风，也能欣赏美景。



在半公开区域，风景与鹅卵石铺设的小路、水景以及树木和容易成活的植物等原生植被共同形成了一种有机的布局。综合建筑由70至160平方米不等的多种户型组成。这个公寓采用6米×3米的模块，不同的房间网格布置也不一样。根据朝向和几何学要求，共有五种单元户型和多种子类型。

建筑师：AQS0 Arquitectos

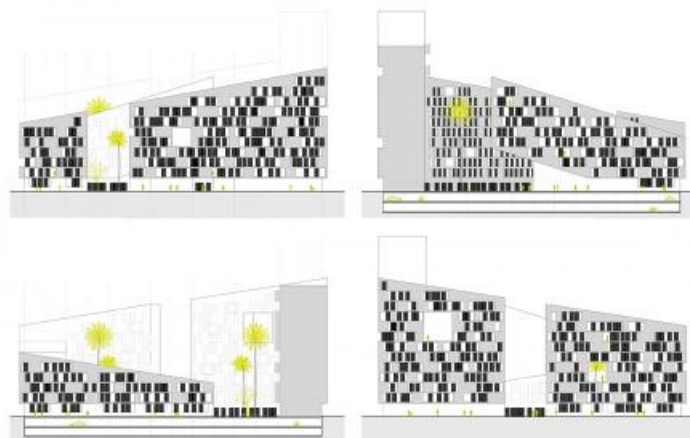
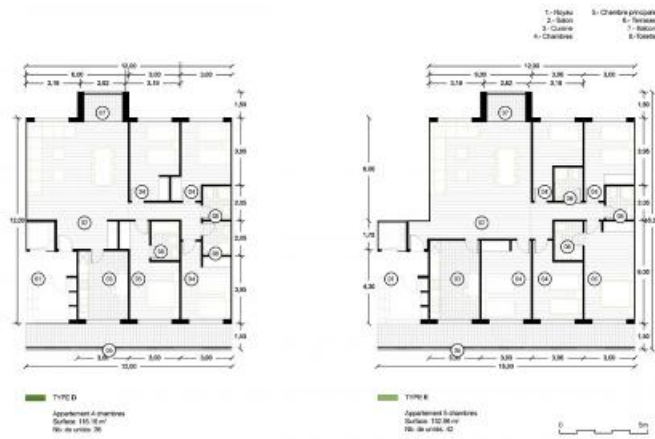
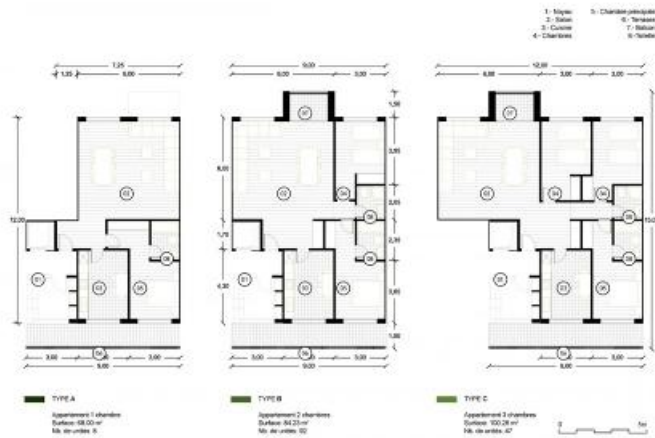
地点：摩洛哥卡萨布兰卡

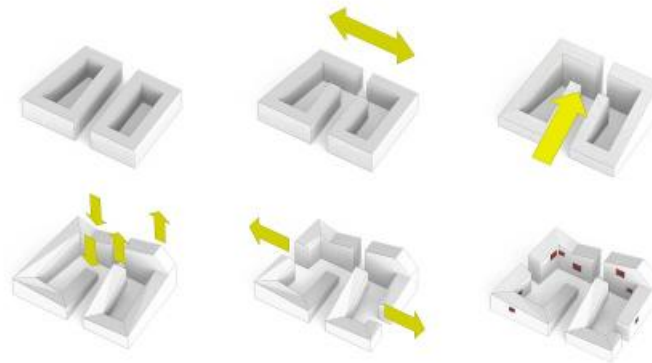
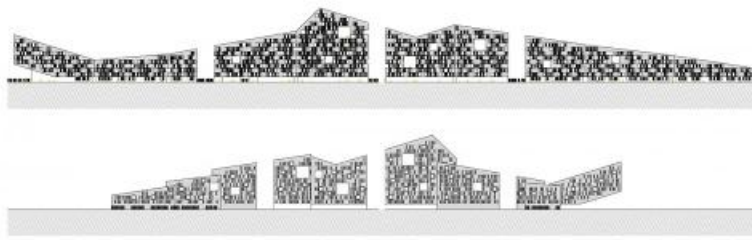
客户：Nokta Group

占地面积：9814 sqm

建筑面积：49,154 sqm







原文:

Defined by a continuous volume snaking around two semipublic courtyards, the Connecting Riads residential complex by AQS0 Arquitectos adapts to the different conditions of the plot to combine a domestic and urban appearance. Its simple gesture is defined by the particular context of each side of the site in a way that the different heights of the elevations become a contemporary and expressive form to which the roof is formed by staircase shaped green terraces. More images and architects' description after the break.

The project is located on the east side of Anfa district in Casablanca, a downtown historic area in the vicinity of an old airport to be demolished. The plot is situated between the Gran Theatre boulevard and a residential area composed of low buildings and an urban park. The scheme is solved conceptually as a continuous block aligned to the surrounding streets and wrapping around two big 'riads'.

In this way the building grows to offer an urban character towards the boulevard and reduces its scale to the opposite side. The upward volume allows the apartments to enjoy the view of the park. The building façade turns into two different strategies: the exterior skin facing the most public context becomes an introverted and formal element while the interior one facing the private courtyards becomes extrovert and domestic.

The first one is made by long balconies enclosed by sliding latticework panels and

the second one is just a white and plain surface only interrupted by long windows and big protruding balconies. This elements arranged in an irregular order are hanged on the wall like flowerpots in an Andalusian patio. The building block is also perforated through big openings working as green terraces and allowing good ventilation and views.

On the semipublic areas, the landscape is treated with an organic layout combining cobbled paving pathways, water features and native vegetation of trees and low-maintenance plants. The complex is composed of different residential typologies ranging from 70 to 160 sqm. The apartments follow a 6#215;3 meters module in which grid are arranged the different rooms. There are five unit types and different subtypes depending on the orientation and geometry.

Architects: <a href="http://www.aqso.net/">AQSO Arquitectos</a>

Location: Casablanca, Morocco

Client: Nokta Group

Site Area: 9814 sqm

Ground Floor Area: 49,154 sqm